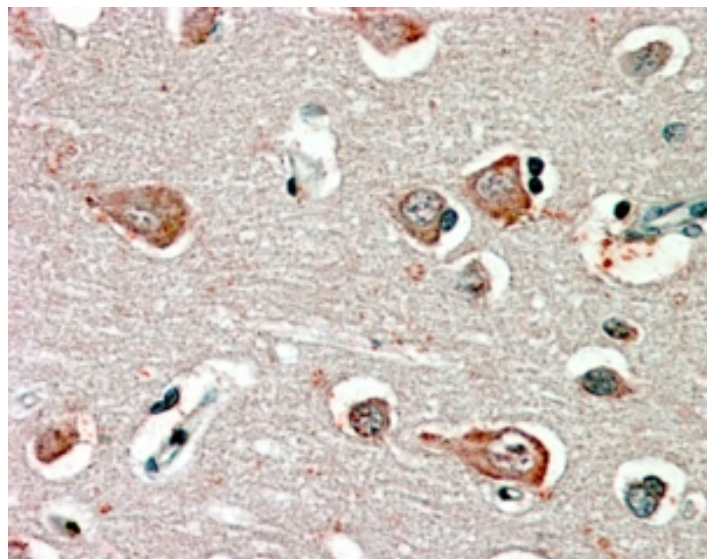


GOAT ANTI-GABRB3 ANTIBODY

SKU: EB09097



SPECIFICATIONS

Formulation	Supplied at 0.5 mg/ml in Tris saline, 0.02% sodium azide, pH7.3 with 0.5% bovine serum albumin.
Unit Size	100 µg
Storage Instructions	Aliquot and store at -20°C. Minimize freezing and thawing.
Synonym / Alias Names	GABAA receptor beta-3 subunit GABA-alpha receptor beta-2 subunit GABA-A receptor beta-3 subunit GABA(A) receptor beta-3 subunit MGC9051 gamma-aminobutyric acid (GABA) A receptor, beta 3 GABRB3
Accession ID	NP_000805.1; NP_068712.1
Blocking Peptide	EBP09097
Immunogen	Peptide with sequence C-EKTAKAKNDRSK, from the internal region of the protein sequence according to NP_000805.1; NP_068712.1.
Product Comments	This antibody is expected to recognize both reported isoforms (NP_000805.1, NP_068712.1).
Peptide Sequence	C-EKTAKAKNDRSK
Purification Method	Purified from goat serum by ammonium sulphate precipitation followed by antigen affinity chromatography using the immunizing peptide.

Shipping Instructions	Refrigerated
Predicted Species	Human, Mouse, Rat, Dog, Cow
Reactive Species	Human
Human Gene ID	2562
Mouse Gene ID	14402
Rat Gene ID	24922
Product Grade	https://prod-vector-labs-pimcore-assets.s3.us-east-1.amazonaws.com/assets/products/image/elite_medium.png
IHC Results	In paraffin embedded Human Cortex shows patchy staining near or at the neuronal cell membrane.. Recommended concentration, 2-4µg/ml.
ELISA Detection Limit	Antibody detection limit dilution 1:8000.
Western Blot	Preliminary experiments in Human Brain (Cerebral Cortex, Frontal Cortex and Cerebellum) lysates gave no specific signal but low background (at antibody concentration up to 1µg/ml). We would appreciate any feedback from people in the field - have any results been reported with other antibodies/lysates?
Application Type	Pep-ELISA, IHC

DOCUMENTS

- [Data Sheet](#)

GALLERY IMAGES

