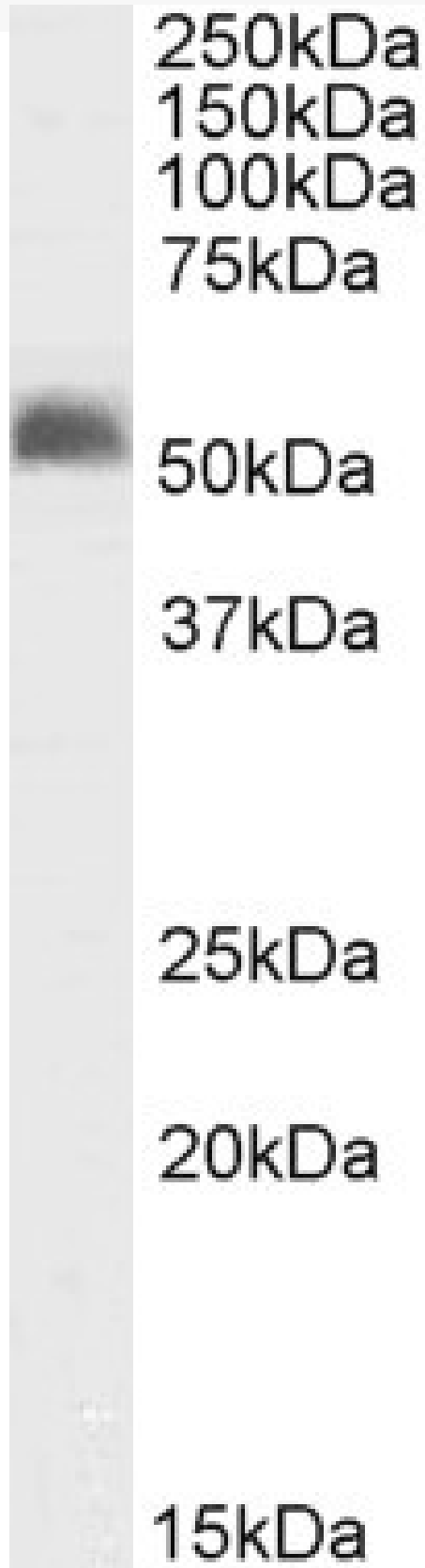


# GOAT ANTI-GABRG2 ANTIBODY

**SKU:** EB10779



## SPECIFICATIONS

<b>Formulation</b>	Supplied at 0.5 mg/ml in Tris saline, 0.02% sodium azide, pH7.3 with 0.5% bovine serum albumin.
<b>Unit Size</b>	100 µg
<b>Storage Instructions</b>	Aliquot and store at -20°C. Minimize freezing and thawing.
<b>Synonym / Alias Names</b>	GABRG2  gamma-aminobutyric acid (GABA) A receptor, gamma 2  CAE2  ECA2  GEFSP3  GABA(A) receptor subunit gamma-2  gamma-aminobutyric acid receptor subunit gamma-2
<b>Accession ID</b>	NP_944494.1; NP_000807.2; NP_944493.2
<b>Blocking Peptide</b>	EBP10779
<b>Immunogen</b>	Peptide with sequence KSDDDYEDYASNK-C, from the N Terminus (mature) of the protein sequence according to NP_944494.1; NP_000807.2; NP_944493.2.
<b>Product Comments</b>	This antibody is expected to recognize all three reported isoforms (NP_944494.1; NP_000807.2; NP_944493.2).
<b>Peptide Sequence</b>	KSDDDYEDYASNK-C
<b>Purification Method</b>	Purified from goat serum by ammonium sulphate precipitation followed by antigen affinity chromatography using the immunizing peptide.
<b>Shipping Instructions</b>	Refrigerated
<b>Predicted Species</b>	Human, Mouse, Rat, Dog, Pig, Cow
<b>Reactive Species</b>	Rat
<b>Human Gene ID</b>	2566
<b>Mouse Gene ID</b>	14406
<b>Rat Gene ID</b>	29709
<b>Product Grade</b>	<a href="https://prod-vector-labs-pimcore-assets.s3.us-east-1.amazonaws.com/assets/products/image/elite_medium.png">https://prod-vector-labs-pimcore-assets.s3.us-east-1.amazonaws.com/assets/products/image/elite_medium.png</a>
<b>ELISA Detection Limit</b>	Antibody detection limit dilution 1:64000.
<b>Western Blot</b>	Approx 55kDa band observed in Rat Brain lysates (calculated MW of 54.0kDa according to Rat NP_899156.1). Recommended concentration: 1-3µg/ml.
<b>Application Type</b>	Pep-ELISA, WB

## DOCUMENTS

- [Data Sheet](#)

## GALLERY IMAGES

