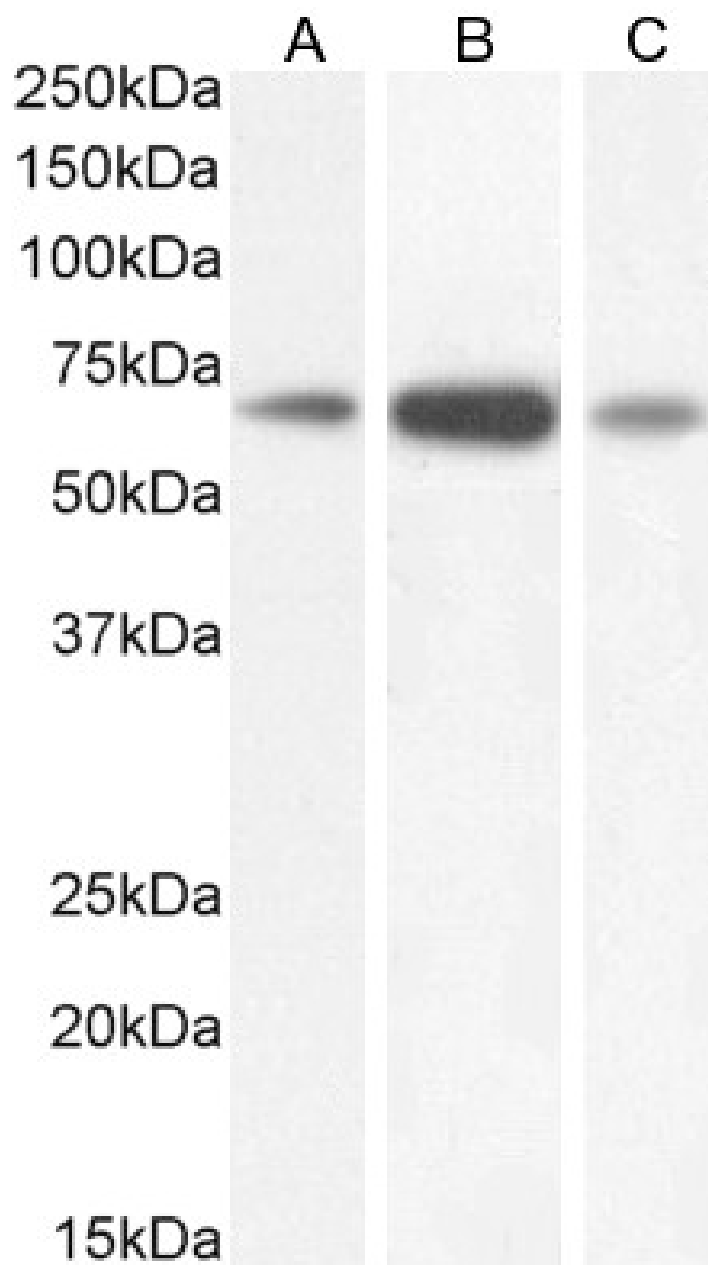


GOAT ANTI-GAD1 (ISOFORM GAD67) ANTIBODY

SKU: EB09109



SPECIFICATIONS

Formulation	Supplied at 0.5 mg/ml in Tris saline, 0.02% sodium azide, pH7.3 with 0.5% bovine serum albumin.
Unit Size	100 µg
Storage	
Instructions	Aliquot and store at -20°C. Minimize freezing and thawing.
Synonym / Alias	GAD25 GAD67 glutamate decarboxylase 1 (brain, 67kD) glutamate decarboxylase 1 OTTHUMP00000041055 SCP GAD FLJ45882 glutamate decarboxylase 1 (brain, 67kDa) GAD1
Names	
Usage Summary	<p>Immunofluorescence: Strong expression of the protein seen in the membrane and cytoplasm of A431 cells. Recommended concentration: 10µg/ml.</p> <p>Flow Cytometry: Flow cytometric analysis of A431 cells. Recommended concentration: 10ug/ml.</p>
Accession ID	NP_000808.2
Blocking Peptide	EBP09109
Immunogen	Peptide with sequence C-PDSPQRREKLHK, from the internal region of the protein sequence according to NP_000808.2.
Product Comments	This antibody is expected to recognize isoform GAD67. There is no cross-reactivity expected with GAD2.
Peptide Sequence	C-PDSPQRREKLHK
Purification Method	Purified from goat serum by ammonium sulphate precipitation followed by antigen affinity chromatography using the immunizing peptide.
Shipping Instructions	Refrigerated
Predicted Species	Human, Mouse, Rat, Dog, Cow, Pig
Reactive Species	Human, Mouse, Rat
Human Gene ID	2571
Mouse Gene ID	14415
Rat Gene ID	24379
Product Grade	https://prod-vector-labs-pimcore-assets.s3.us-east-1.amazonaws.com/assets/products/image/elite_plus_medium.png
ELISA Detection Limit	Antibody detection limit dilution 1:128000.
Western Blot	Approx 70kDa band observed in Human Cerebellum, and in Mouse and Rat Brain lysates (calculated MW of 66.9kDa according to Human NP_000808.2, and 66.6kDa according to Mouse NP_032103.2 and Rat NP_058703.1). Recommended concentration: 0.3-1µg/ml. Primary incubation 1hour at room temperature.
Application Type	Pep-ELISA, WB, IF, FC

DOCUMENTS

- [Data Sheet](#)

GALLERY IMAGES

