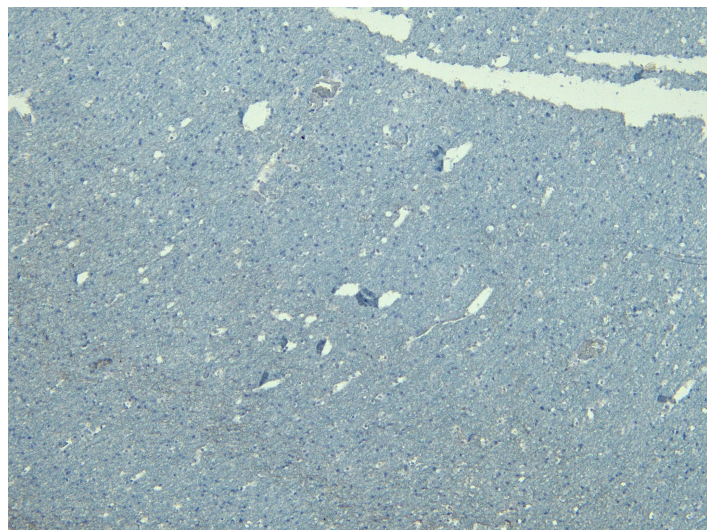


GOAT ANTI-GAD2 / GAD65 ANTIBODY

SKU: EB06730



SPECIFICATIONS

Formulation Supplied at 0.5 mg/ml in Tris saline, 0.02% sodium azide, pH7.3 with 0.5% bovine serum albumin.

Unit Size 100 µg

Storage Instructions Aliquot and store at -20°C. Minimize freezing and thawing.

Synonym / Alias Names Glutamate decarboxylase-2 (pancreas)|MGC161607|MGC161605|RP11-420F12.2|glutamate decarboxylase 2 (pancreatic islets and brain, 65kD)|Glutamate decarboxylase-2 (pancreas)|glutamate decarboxylase 2 (pancreatic islets and brain, 65kDa)|GAD65|GAD2

Accession ID NP_000809.1; NP_001127838.1

Blocking Peptide EBP06730

Immunogen Peptide with sequence C-TLEDNEERMSRLSK, from the internal region of the protein sequence according to NP_000809.1; NP_001127838.1.

Product Comments This antibody is expected to recognise both reported variants.

Peptide Sequence C-TLEDNEERMSRLSK

Purification Method Purified from goat serum by ammonium sulphate precipitation followed by antigen affinity chromatography using the immunizing peptide.

| | |
|------------------------------|---|
| Shipping Instructions | Refrigerated |
| Predicted Species | Human, Mouse, Rat, Dog |
| Reactive Species | Human |
| Human Gene ID | 2572 |
| Product Grade | https://prod-vector-labs-pimcore-assets.s3.us-east-1.amazonaws.com/assets/products/image/elite_medium.png |
| IHC Results | Paraffin embedded Human Brain (Cortex). Recommended concentration: 6-8µg/ml. |
| ELISA | |
| Detection Limit | Antibody detection limit dilution 1:32000. |
| Western Blot | Approx 65kDa band observed in Human Brain (Hippocampus) lysates (calculated MW of 65.4kDa according to NP_000809.1). Recommended concentration: 0.5-1.5µg/ml. Primary incubation was 1 hour. |
| Application Type | Pep-ELISA, WB, IHC |

DOCUMENTS

- [Data Sheet](#)

GALLERY IMAGES

