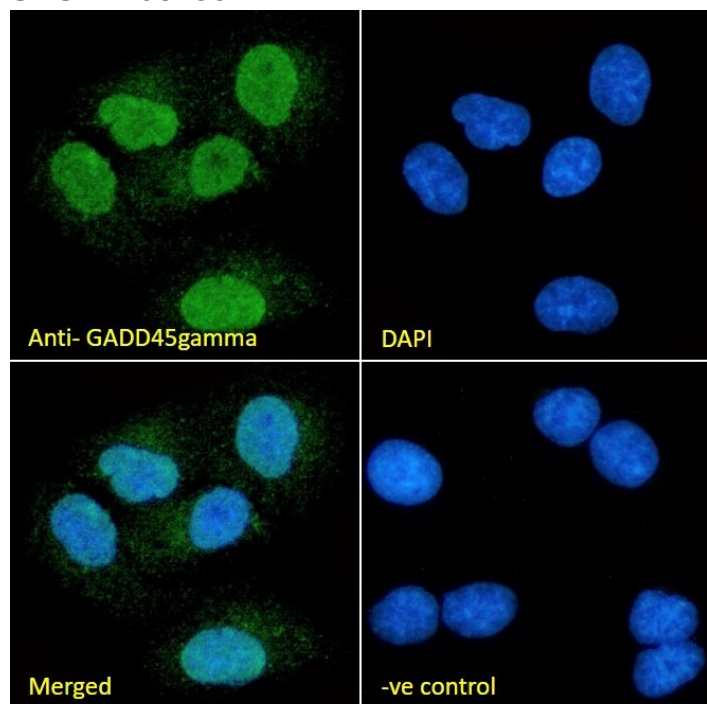


GOAT ANTI-GADD45GAMMA (AA 18 TO 28) ANTIBODY

SKU: EB08299



SPECIFICATIONS

Formulation Supplied at 0.5 mg/ml in Tris saline, 0.02% sodium azide, pH7.3 with 0.5% bovine serum albumin.

Unit Size 100 µg

Storage Instructions Aliquot and store at -20°C. Minimize freezing and thawing.

Synonym / Alias Names growth arrest and DNA-damage-inducible gamma|gadd-related protein, 17 kD|GADD45-gamma|GRP17|GADD45gamma|DDIT2|CR6|growth arrest and DNA-damage-inducible, gamma

Usage Summary **Immunofluorescence:** Strong expression of the protein seen in the nuclei of HeLa and A549 cells. Recommended concentration: 10µg/ml. **Flow Cytometry:** Flow cytometric analysis of A549 cells. Recommended concentration: 10ug/ml.

Accession ID NP_006696.1

Blocking Peptide EBP08299

Immunogen	Peptide with sequence C-RMQGAGKALHE, from the internal region of the protein sequence according to NP_006696.1.
Peptide Sequence	C-RMQGAGKALHE
Purification Method	Purified from goat serum by ammonium sulphate precipitation followed by antigen affinity chromatography using the immunizing peptide.
Shipping Instructions	Refrigerated
Predicted Species	Human, Mouse, Rat, Cow
Reactive Species	Human
Human Gene ID	10912
Mouse Gene ID	23882
Rat Gene ID	291005
Product Grade	https://prod-vector-labs-pimcore-assets.s3.us-east-1.amazonaws.com/assets/products/image/elite_medium.png
ELISA Detection Limit	Antibody detection limit dilution 1:32000.
Western Blot	Preliminary testing showed a band at approx 23kDa in lysate of cell line A549 and in Human Prostate and Testes lysate at a concentration of 0.5-1ug/ml (calculated Mwt.of 17.1kDa according to NP_006696.1). This molecular weight is observed by other sources. Primary incubation 1 hour at room temperature.
Application Type	Pep-ELISA, IF, FC

DOCUMENTS

- [Data Sheet](#)

GALLERY IMAGES

