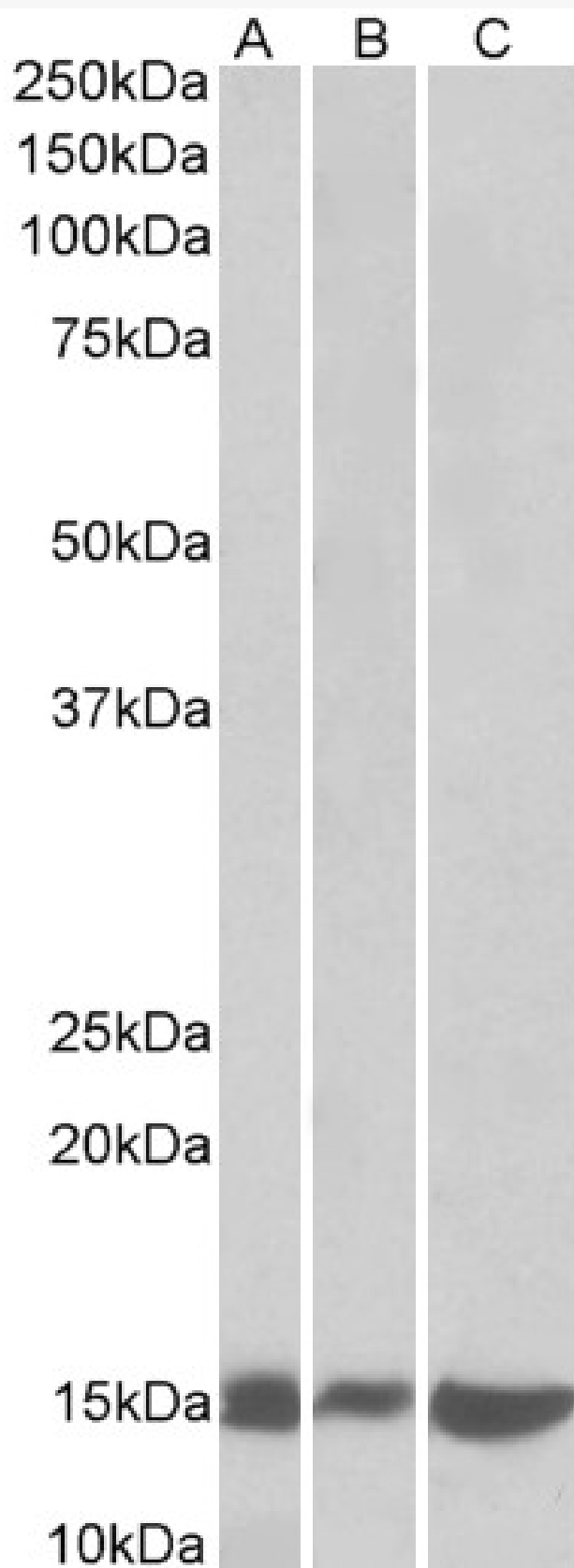


GOAT ANTI-GALECTIN-1 (MOUSE) ANTIBODY

SKU: EB10777



SPECIFICATIONS

Formulation Supplied at 0.5 mg/ml in Tris saline, 0.02% sodium azide, pH7.3 with 0.5% bovine serum albumin.

Unit Size 100 µg

Storage Instructions Aliquot and store at -20°C. Minimize freezing and thawing.

Synonym / Alias Names lactose-binding lectin 1| galectin-1| galaptin| beta-galactoside-binding lectin L-14-I| beta-galactoside binding protein| S-Lac lectin 1| galectin-1| Lect14| L14| L-14.5| Galbp| Gal-1| AA410090| lectin, galactose binding, soluble 1|Lgals1

Accession ID NP_032521.1

Blocking Peptide EBP10777

Immunogen Peptide with sequence KPGECLKVRGEVASE, from the N Terminus (near) of the protein sequence according to NP_032521.1.

Peptide Sequence KPGECLKVRGEVASE

Purification Method Purified from goat serum by ammonium sulphate precipitation followed by antigen affinity chromatography using the immunizing peptide.

Shipping Instructions Refrigerated

Predicted Species Human, Mouse, Rat, Pig, Cow

Reactive Species Mouse, Rat

Human Gene ID 3956

Mouse Gene ID 16852

Rat Gene ID 56646

Product Grade https://prod-vector-labs-pimcore-assets.s3.us-east-1.amazonaws.com/assets/products/image/elite_medium.png

ELISA Detection Limit Antibody detection limit dilution 1:8000.

Western Blot Approx 15kDa band observed in lysates of Mouse and Rat Pancreas and of cell line NIH3T3 (calculated MW of 14.9kDa according to NP_032521.1). Recommended concentration: 0.1-0.3µg/ml.

Application Type Pep-ELISA, WB

DOCUMENTS

- [Data Sheet](#)

GALLERY IMAGES

