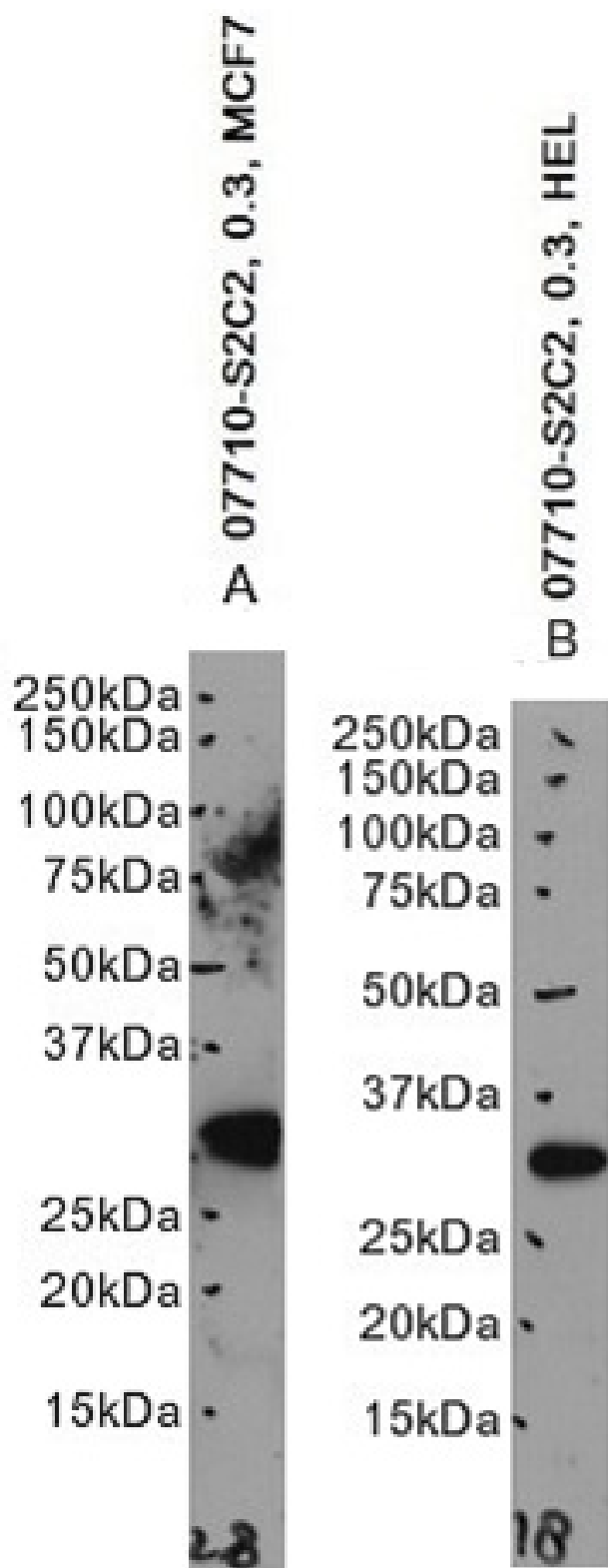


# GOAT ANTI-GALECTIN 3 ANTIBODY

**SKU:** EB07710



## SPECIFICATIONS

<b>Formulation</b>	Supplied at 0.5 mg/ml in Tris saline, 0.02% sodium azide, pH7.3 with 0.5% bovine serum albumin.
<b>Unit Size</b>	100 µg
<b>Storage Instructions</b>	Aliquot and store at -20°C. Minimize freezing and thawing.
<b>Synonym / Alias Names</b>	lectin, galactoside-binding, soluble, 3 (galectin 3) laminin-binding protein galectin-3 internal gene galectin 3 galactose-specific lectin 3 carbohydrate-binding protein 35 MAC-2 antigen IgE-binding protein MAC2 LGALS2 GALIG GALBP GAL3 CBP35 lectin, galactoside-binding, soluble, 3 LGALS3
<b>Accession ID</b>	NP_002297.2
<b>Blocking Peptide</b>	EBP07710
<b>Immunogen</b>	Peptide with sequence CNTKLDNNWGREERQ, from the internal region of the protein sequence according to NP_002297.2.
<b>Peptide Sequence</b>	CNTKLDNNWGREERQ
<b>Purification Method</b>	Purified from goat serum by ammonium sulphate precipitation followed by antigen affinity chromatography using the immunizing peptide.
<b>Shipping Instructions</b>	Refrigerated
<b>Predicted Species</b>	Human
<b>Reactive Species</b>	Human
<b>Human Gene ID</b>	3958
<b>Product Grade</b>	<a href="https://prod-vector-labs-pimcore-assets.s3.us-east-1.amazonaws.com/assets/products/image/elite_medium.png">https://prod-vector-labs-pimcore-assets.s3.us-east-1.amazonaws.com/assets/products/image/elite_medium.png</a>
<b>ELISA</b>	
<b>Detection Limit</b>	Antibody detection limit dilution 1:128000.
<b>Western Blot</b>	Approx. 28kDa band observed in Human Colon, Lung and Colorectal Cancer lysates, and approx. 30kDa in lysates of cell lines HeLa and MCF7 (calculated MW of 26.2kDa according to NP_002297.2). Recommended concentration: 0.3-1ug/ml. Primary incubation 1 hour at room temperature.
<b>Application Type</b>	Pep-ELISA, WB

## DOCUMENTS

- [Data Sheet](#)

## GALLERY IMAGES

