



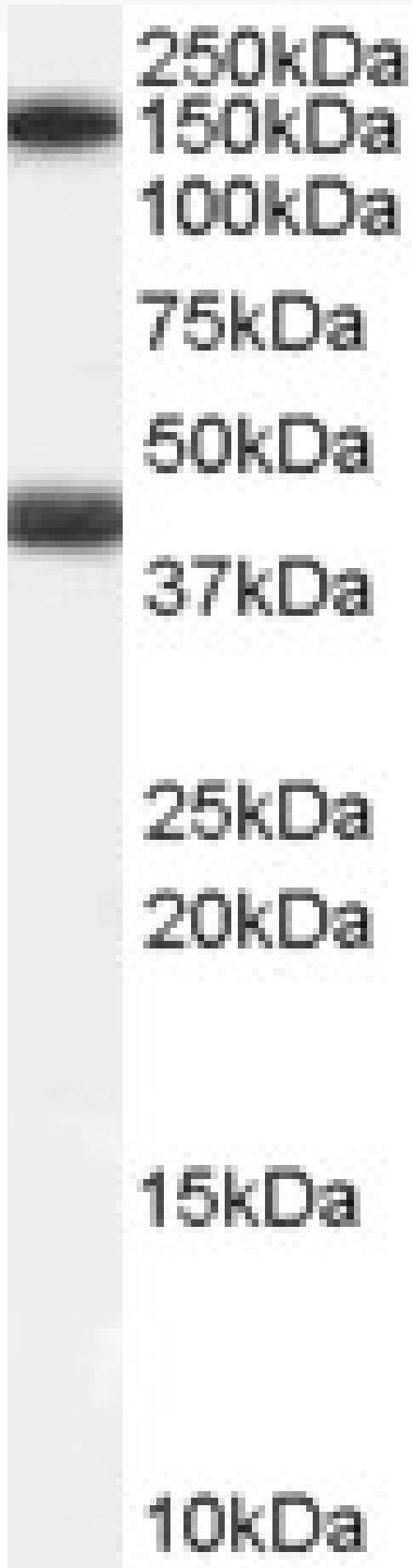
www.everestbiotech.com

Email: customerservice@vectorlabs.com

Telephone: [\(650\) 697-3600](tel:(650)697-3600)

GOAT ANTI-GALR1 (C TERM) ANTIBODY

SKU: EB07562





SPECIFICATIONS

Formulation	Supplied at 0.5 mg/ml in Tris saline, 0.02% sodium azide, pH7.3 with 0.5% bovine serum albumin.
Unit Size	100 µg
Storage Instructions	Aliquot and store at -20°C. Minimize freezing and thawing.
Synonym / Alias Names	GALR1 galanin receptor 1 GALNR GALNR1
Accession ID	NP_001471.1
Blocking Peptide	EBP07562
Immunogen	Peptide with sequence C-HLSDTKENKSRID, from the C Terminus of the protein sequence according to NP_001471.1.
Peptide Sequence	C-HLSDTKENKSRID
Purification Method	Purified from goat serum by ammonium sulphate precipitation followed by antigen affinity chromatography using the immunizing peptide.
Shipping Instructions	Refrigerated
Predicted Species	Human
Reactive Species	Human
Human Gene ID	2587
Product Grade	https://prod-vector-labs-pimcore-assets.s3.us-east-1.amazonaws.com/assets/products/image/elite_medium.png
ELISA Detection Limit	Antibody detection limit dilution 1:64000.
Western Blot	Approx 40kDa band observed in Human Heart lysates (calculated MW of 38.9kDa according to NP_001471.1). Recommended concentration: 0.1-0.3µg/ml. An additional band of unknown identity was also consistently observed at 150kDa. This band was successfully blocked by incubation with the immunising peptide. We would appreciate any feedback from people in the field - have any such results been reported with other antibodies/lysates? Have any further splice variants/modified forms been reported?
Application Type	Pep-ELISA, WB



www.everestbiotech.com

Email: customerservice@vectorlabs.com

Telephone: [\(650\) 697-3600](tel:(650)697-3600)

DOCUMENTS

- [Data Sheet](#)

GALLERY IMAGES

