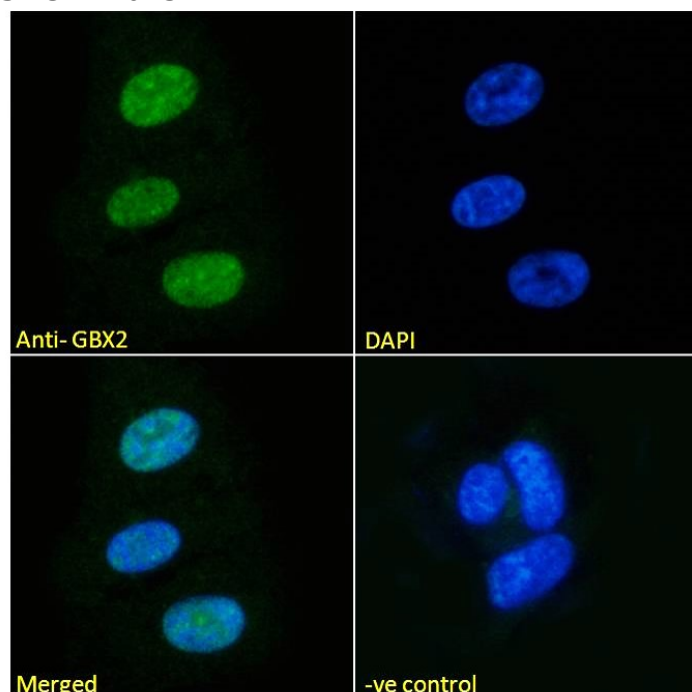


GOAT ANTI-GBX2 ANTIBODY

SKU: EB07377



SPECIFICATIONS

Formulation Supplied at 0.5 mg/ml in Tris saline, 0.02% sodium azide, pH7.3 with 0.5% bovine serum albumin.

Unit Size 100 µg

Storage Instructions Aliquot and store at -20°C. Minimize freezing and thawing.

Synonym /

Alias gastrulation brain homeo box 2|gastrulation brain homeobox 2|GBX2

Names

Usage Immunofluorescence: Strong expression of the protein seen in the nucleus of HeLa and U2OS cells. Recommended concentration: 10µg/ml.

Accession ID NP_001476.2

Blocking Peptide EBP07377

Immunogen Peptide with sequence C-QGKDESKVEDDPK, from the internal region of the protein sequence according to NP_001476.2.

Peptide Sequence	C-QGKDESKVEDDPK
Purification Method	Purified from goat serum by ammonium sulphate precipitation followed by antigen affinity chromatography using the immunizing peptide.
Shipping Instructions	Refrigerated
Predicted Species	Human, Mouse, Rat, Dog, Pig, Cow
Reactive Species	Human
Human Gene ID	2637
Mouse Gene ID	14472
Rat Gene ID	114500
Product Grade	https://prod-vector-labs-pimcore-assets.s3.us-east-1.amazonaws.com/assets/products/image/elite_medium.png
IHC Results	Paraffin embedded Human Brain (Cortex) and Placenta. Recommended concentration: 5µg/ml.
ELISA	
Detection Limit	Antibody detection limit dilution 1:8000.
Application Type	Pep-ELISA, IHC, IF

DOCUMENTS

- [Data Sheet](#)

GALLERY IMAGES

