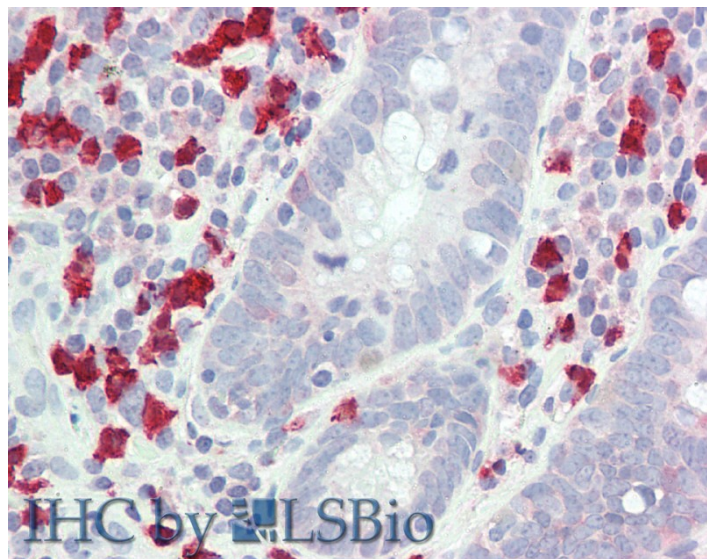


# GOAT ANTI-GCH1 ANTIBODY

**SKU:** EB08354



## SPECIFICATIONS

**Formulation** Supplied at 0.5 mg/ml in Tris saline, 0.02% sodium azide, pH7.3 with 0.5% bovine serum albumin.

**Unit Size** 100 µg

**Storage Instructions** Aliquot and store at -20°C. Minimize freezing and thawing.

**Synonym / Alias Names** guanosine 5\1-triphosphate cyclohydrolase II|GTP cyclohydrolase 1|GTPCH1|GTP-CH-1|GCH|DYT5|GTP cyclohydrolase 1 (dopa-responsive dystonia)|GCH1

**Accession ID** NP\_000152.1 ; NP\_001019195.1 ; NP\_001019241.1 ; NP\_001019242.1

**Blocking Peptide** EBP08354

**Immunogen** Peptide with sequence C-GKVHIGYLPNKQ, from the internal region of the protein sequence according to NP\_000152.1 ; NP\_001019195.1 ; NP\_001019241.1 ; NP\_001019242.1 .

**Product Comments** This antibody is expected to recognize all four isoforms (NP\_000152.1 ; NP\_001019195.1 ; NP\_001019241.1 ; NP\_001019242.1)

**Peptide Sequence** C-GKVHIGYLPNKQ

**Purification Method** Purified from goat serum by ammonium sulphate precipitation followed by antigen affinity chromatography using the immunizing peptide.

<b>Shipping Instructions</b>	Refrigerated
<b>Predicted Species</b>	Human, Mouse, Rat
<b>Reactive Species</b>	Human
<b>Human Gene ID</b>	2643
<b>Mouse Gene ID</b>	14528
<b>Rat Gene ID</b>	29244
<b>Product Grade</b>	<a href="https://prod-vector-labs-pimcore-assets.s3.us-east-1.amazonaws.com/assets/products/image/elite_medium.png">https://prod-vector-labs-pimcore-assets.s3.us-east-1.amazonaws.com/assets/products/image/elite_medium.png</a>
<b>IHC Results</b>	Paraffin embedded Human Brain (Cerebellum) and Small Intestine. Recommended concentration: 5µg/ml.
<b>ELISA</b>	
<b>Detection Limit</b>	Antibody detection limit dilution 1:16000.
<b>Application Type</b>	Pep-ELISA, IHC

## DOCUMENTS

- [Data Sheet](#)

## GALLERY IMAGES

