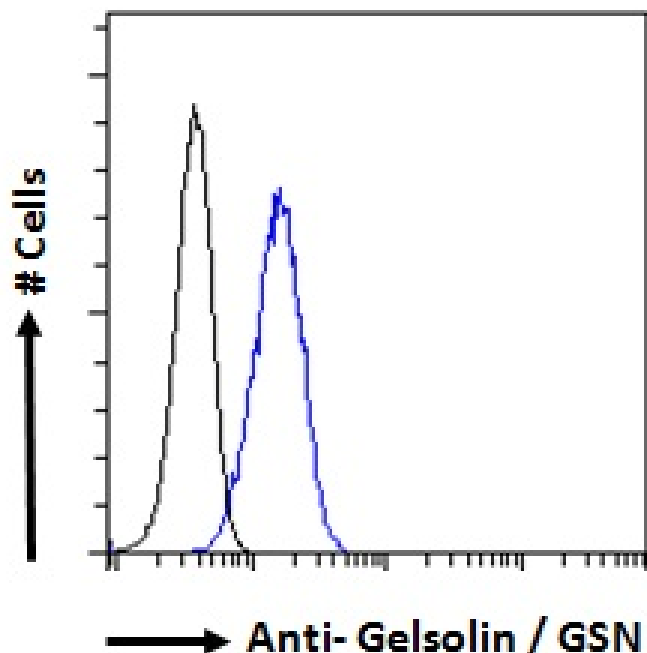


GOAT ANTI-GELSOLIN / GSN ANTIBODY

SKU: EB07503



SPECIFICATIONS

Formulation Supplied at 0.5 mg/ml in Tris saline, 0.02% sodium azide, pH7.3 with 0.5% bovine serum albumin.

Unit Size 100 µg

Storage Instructions Aliquot and store at -20°C. Minimize freezing and thawing.

Synonym /

Alias DKFZp313L0718[gelsolin (amyloidosis, Finnish type)]gelsolin|GSN

Names

Usage <p>Flow Cytometry: Flow cytometric analysis of HeLa cells. Recommended concentration:

Summary 10ug/ml.</p>

Accession ID NP_000168.1; NP_937895.1; NP_001121138.1; NP_001244958.1; NP_001244959.1; NP_001121135.2; NP_001340005.1; NP_001340007.1

Blocking Peptide EBP07503

Immunogen Peptide with sequence C-PRLKDKKMDAHP, from the internal region of the protein sequence according to NP_000168.1; NP_937895.1; NP_001121138.1; NP_001244958.1; NP_001244959.1; NP_001121135.2; NP_001340005.1; NP_001340007.1.

Product Comments	This antibody is expected to recognize isoforms a, b, c, d, e, f, g, h
Peptide Sequence	C-PRLKDKKMDAHP
Purification Method	Purified from goat serum by ammonium sulphate precipitation followed by antigen affinity chromatography using the immunizing peptide.
Shipping Instructions	Refrigerated
Predicted Species	Human, Mouse, Rat, Dog, Cow
Reactive Species	Human
Human Gene ID	2934
Mouse Gene ID	227753
Rat Gene ID	296654
Product Grade	https://prod-vector-labs-pimcore-assets.s3.us-east-1.amazonaws.com/assets/products/image/elite_medium.png
ELISA Detection Limit	Antibody detection limit dilution 1:128000.
Western Blot	Approx 90kDa observed in Human Colorectal cancer lysates and in preliminary testing of Human Spleen and Parathyroid lysate (calculated MW of 85.7kDa according to NP_000168.1). Recommended concentration: 0.1-2µg/ml. Primary incubation 1 hour at room temperature.
Application Type	Pep-ELISA, WB, FC

DOCUMENTS

- [Data Sheet](#)

GALLERY IMAGES

