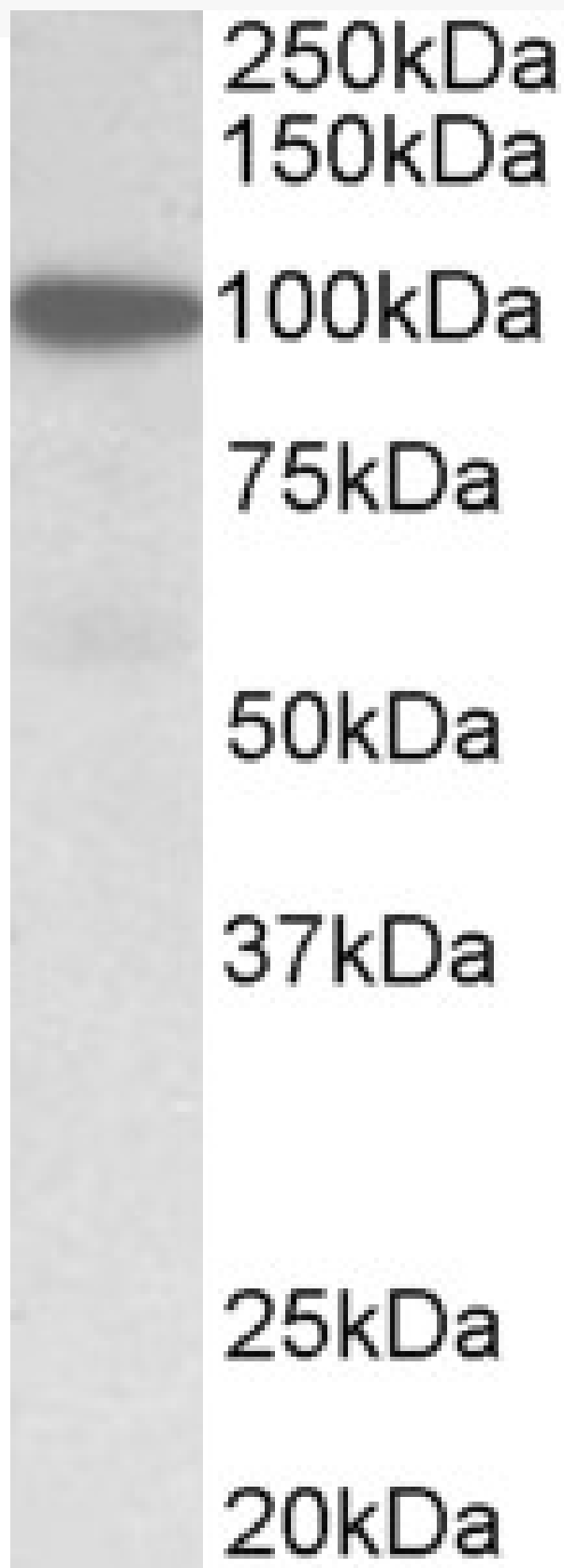


GOAT ANTI-GELSOLIN (ISOFORM A) ANTIBODY

SKU: EB11449



SPECIFICATIONS

Formulation	Supplied at 0.5 mg/ml in Tris saline, 0.02% sodium azide, pH7.3 with 0.5% bovine serum albumin.
Unit Size	100 µg
Storage Instructions	Aliquot and store at -20°C. Minimize freezing and thawing.
Synonym / Alias Names	GSN OTTHUMP00000162202 OTTHUMP00000022014 OTTHUMP00000022011 gelsolin DKFZp313L0718 brevin AGEL ADF actin-depolymerizing factor
Accession ID	NP_000168.1; NP_937895.1; NP_001121138.1
Blocking Peptide	EBP11449
Immunogen	Peptide with sequence PQGRVPEARPNS-C, from the N Terminus of the protein sequence according to NP_000168.1; NP_937895.1; NP_001121138.1.
Product Comments	This antibody is expected to recognize isoform a (NP_000168.1) only . Reported variants represent identical protein: NP_001121138.1, NP_001121139.1 Reported variants represent identical protein: NP_001121135.1, NP_937895.1, NP_001121134.1, NP_001121137.1, NP_001121136.1
Peptide Sequence	PQGRVPEARPNS-C
Purification Method	Purified from goat serum by ammonium sulphate precipitation followed by antigen affinity chromatography using the immunizing peptide.
Shipping Instructions	Refrigerated
Predicted Species	Human
Reactive Species	Human
Human Gene ID	2934
Product Grade	https://prod-vector-labs-pimcore-assets.s3.us-east-1.amazonaws.com/assets/products/image/elite_medium.png
ELISA Detection Limit	Antibody detection limit dilution 1:64000.
Western Blot	Approx 100kDa band observed in Human Colon, Duodenum, Heart and Skeletal Muscle lysates (calculated MW of 85.7kDa according to NP_000168.1). Recommended concentration: 1-3µg/ml. Primary incubation 1 hour at room temperature.
Application Type	Pep-ELISA, WB

DOCUMENTS

- [Data Sheet](#)

GALLERY IMAGES

