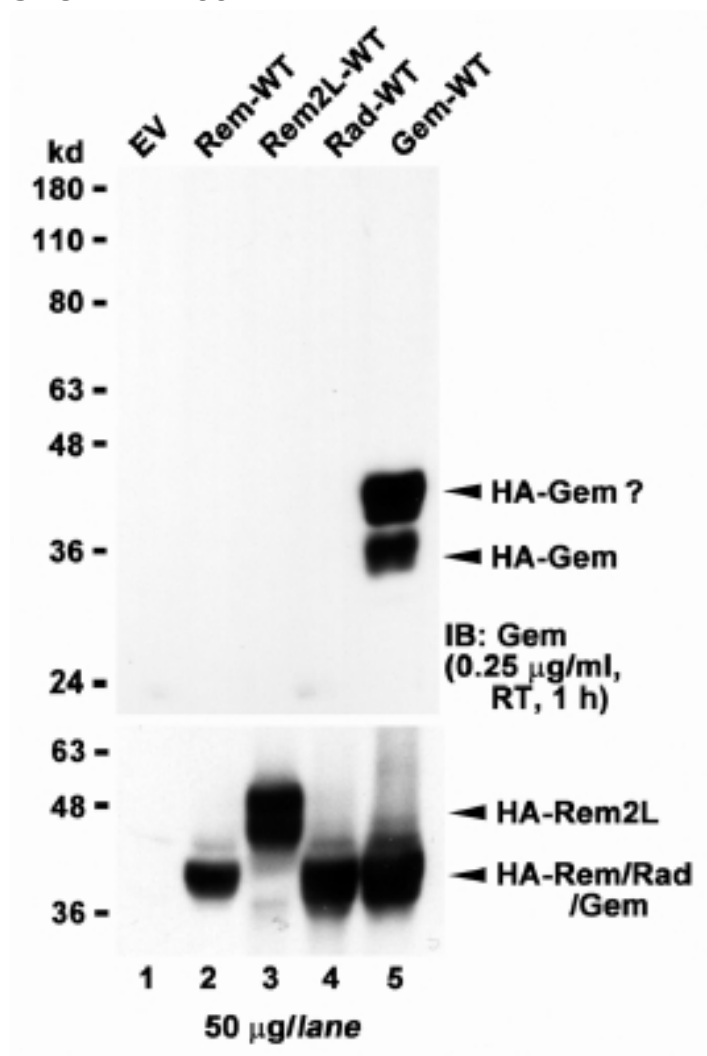


## GOAT ANTI-GEM (AA34-46) ANTIBODY

SKU: EB11488



## SPECIFICATIONS

**Formulation** Supplied at 0.5 mg/ml in Tris saline, 0.02% sodium azide, pH7.3 with 0.5% bovine serum albumin.

**Unit Size** 100 µg

**Storage** Aliquot and store at -20°C. Minimize freezing and thawing.

**Instructions**

<b>Synonym / Alias Names</b>	GEM GTP binding protein overexpressed in skeletal muscle GTP-binding mitogen-induced T-cell protein GTP-binding protein GEM GTP-binding protein overexpressed in skeletal muscle kinase-inducible Ras-like protein KIR MGC26294 OTTHUMP00000226600 OTTHUMP00000226601 RAS-like protein KIR
<b>Accession ID</b>	NP_005252.1
<b>Blocking Peptide</b>	EBP11488
<b>Immunogen</b>	Peptide with sequence C-QKEPHQYSHRNRH, from the internal region of the protein sequence according to NP_005252.1.
<b>Product Comments</b>	Reported variants represent identical protein: NP_005252.1, NP_859053.1
<b>Peptide Sequence</b>	C-QKEPHQYSHRNRH
<b>Purification Method</b>	Purified from goat serum by ammonium sulphate precipitation followed by antigen affinity chromatography using the immunizing peptide.
<b>Shipping Instructions</b>	Refrigerated
<b>Predicted Species</b>	Human
<b>Reactive Species</b>	Human
<b>Human Gene ID</b>	2669
<b>Product Grade</b>	<a href="https://prod-vector-labs-pimcore-assets.s3.us-east-1.amazonaws.com/assets/products/image/elite_medium.png">https://prod-vector-labs-pimcore-assets.s3.us-east-1.amazonaws.com/assets/products/image/elite_medium.png</a>
<b>ELISA Detection Limit</b>	Antibody detection limit dilution 1:16000.
<b>Western Blot</b>	In transfected HEK293 transiently expressing Human recombinant GEM bands of approx. 35+45kDa are observed. These bands are not observed in the transfected HEK293 with empty vector and the antibody does not cross-react to related protein such as Rem, Rem2L or Rad. Data provided by Prof. R Andres, Univ. Kentucky, USA. A similar banding pattern we observed in Human Spleen. The calculated molecular size is 33.9kDa according to NP_005252.1. Recommended concentration: 1-3µg/ml.
<b>Application Type</b>	Pep-ELISA, WB

## DOCUMENTS

- [Data Sheet](#)

## GALLERY IMAGES

