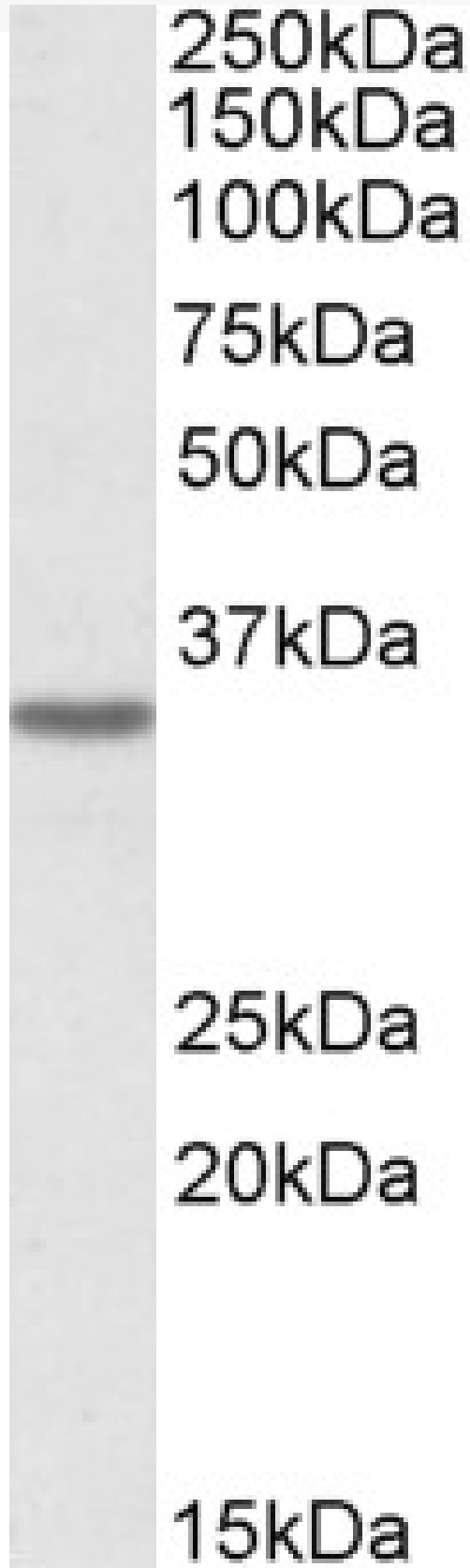


GOAT ANTI-MICS1 / GHITM ANTIBODY

SKU: EB09815



SPECIFICATIONS

Formulation	Supplied at 0.5 mg/ml in Tris saline, 0.02% sodium azide, pH7.3 with 0.5% bovine serum albumin.
Unit Size	100 µg
Storage Instructions	Aliquot and store at -20°C. Minimize freezing and thawing.
Synonym / Alias Names	GHITM transmembrane BAX inhibitor motif containing TMBIM5 PTD010 My021 mitochondrial morphology and cristae structure 1 MICS1 HSPC282 growth hormone inducible transmembrane protein FLJ26584 DKFZp566C0746 DERP2 dermal papilla-derived protein 2
Accession ID	NP_055209.2
Blocking Peptide	EBP09815
Immunogen	Peptide with sequence C-PSREYATKTRIGIR, from the internal region of the protein sequence according to NP_055209.2.
Peptide Sequence	C-PSREYATKTRIGIR
Purification Method	Purified from goat serum by ammonium sulphate precipitation followed by antigen affinity chromatography using the immunizing peptide.
Shipping Instructions	Refrigerated
Predicted Species	Human, Mouse, Rat, Dog, Cow, Pig
Reactive Species	Human
Human Gene ID	27069
Mouse Gene ID	66092
Rat Gene ID	290596
Product Grade	https://prod-vector-labs-pimcore-assets.s3.us-east-1.amazonaws.com/assets/products/image/elite_medium.png
ELISA Detection Limit	Antibody detection limit dilution 1:8000.
Western Blot	Approx 35kDa band observed in lysates of cell line HeLa and of Human Brain (Cerebellum), Duodenum and Heart (calculated MW of 37.2kDa according to Human NP_055209.2). Recommended concentration: 0.01-0.1µg/ml.
Application Type	Pep-ELISA, WB

SELECTED REFERENCES

[{"pmid": 28589937, "intro": "**This antibody has been successfully used in Western blot on Human:**", "title": "Loss of Parkinson's disease-associated protein CHCHD2 affects mitochondrial crista structure and destabilizes cytochrome c", "author": "Meng H, Yamashita C, Shiba-Fukushima K, Inoshita T, Funayama M, Sato S, Hatta T, Natsume T, Umitsu M, Takagi J, Imai Y, Hattori N.", "journal": "Nat Commun. 2017 Jun 7;8:15500."}]

DOCUMENTS

- [Data Sheet](#)

GALLERY IMAGES

