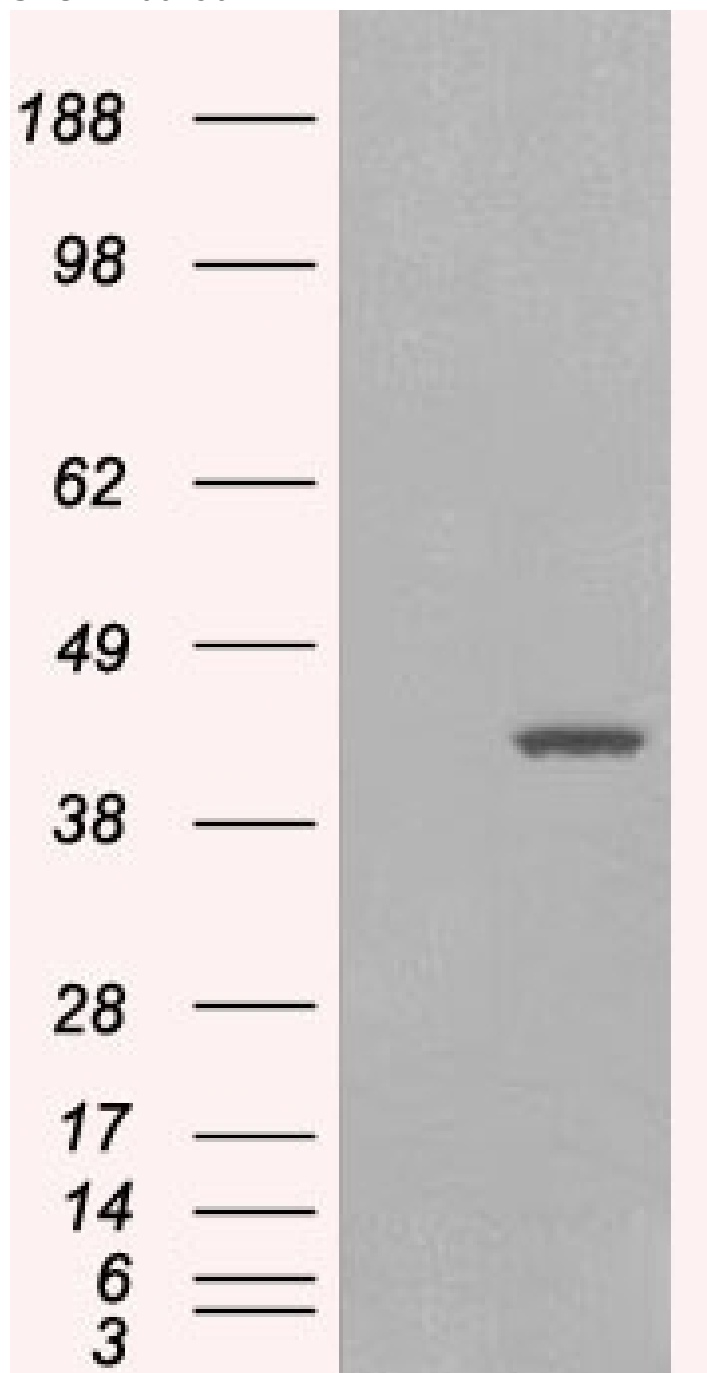


GOAT ANTI-GIPC1 / NIP ANTIBODY

SKU: EB06196



SPECIFICATIONS

Formulation	Supplied at 0.5 mg/ml in Tris saline, 0.02% sodium azide, pH7.3 with 0.5% bovine serum albumin.
Unit Size	100 µg
Storage	Aliquot and store at -20°C. Minimize freezing and thawing.
Instructions	
Synonym / Alias Names	SYNECTIN synectin regulator of G-protein signalling 19 interacting protein 1 IGF-1 receptor interacting protein 1 GLUT1 C-terminal binding protein TIP-2 SYNECTIN SEMCAP RG519IP1 MGC3774 MGC15889 IIP-1 Hs.6454 GLUT1CBP GIPC C19orf3 GIPC PDZ domain containing family, member 1 NIP GIPC1
Accession ID	NP_005707.1; NP_974197.1; NP_974199.1; NP_974196.1; NP_974198.1; NP_974223.1
Blocking Peptide	EBP06196
Immunogen	Peptide with sequence C-GAIGDAKVGRY, from the C Terminus of the protein sequence according to NP_005707.1; NP_974197.1; NP_974199.1; NP_974196.1; NP_974198.1; NP_974223.1.
Product Comments	This antibody is expected to recognize both isoform 1 (NP_005707.1, NP_974197.1 and NP_974199.1) and isoform 2 (NP_974196.1, NP_974198.1 and NP_974223.1).
Peptide Sequence	C-GAIGDAKVGRY
Purification Method	Purified from goat serum by ammonium sulphate precipitation followed by antigen affinity chromatography using the immunizing peptide.
Shipping Instructions	Refrigerated
Predicted Species	Human, Mouse, Rat, Cow
Reactive Species	Human
Human Gene ID	10755
Mouse Gene ID	67903
Rat Gene ID	83823
Product Grade	https://prod-vector-labs-pimcore-assets.s3.us-east-1.amazonaws.com/assets/products/image/elite_medium.png
ELISA Detection Limit	Antibody detection limit dilution 1:128000.
Western Blot	Approx 38kDa and strong 23-24kDa bands observed in lysates of cell line HeLa, and approx 24kDa also observed in Human Pancreas, Kidney and Muscle lysates (calculated MW of 36.0kDa according to NP_005707.1, NP_974197.1 and NP_974199.1 and 26.1kDa according to NP_974198.1 and NP_974223.1). In transfected HEK293 transiently expressing GIPC1 isoform 1 a band of approx. 40kDa is observed. This band is not observed in the non-transfected HEK293. Recommended concentration: 0.03-0.1µg/ml.
Application Type	Pep-ELISA, WB

DOCUMENTS

- [Data Sheet](#)

GALLERY IMAGES

