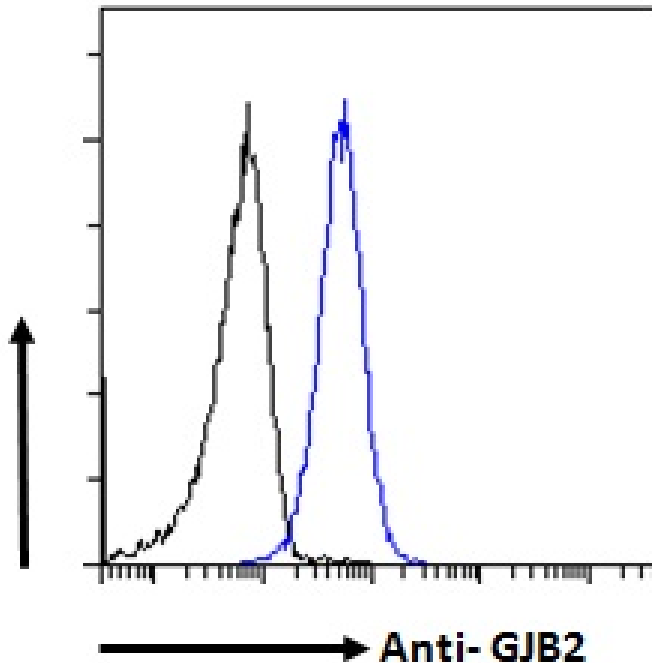




GOAT ANTI-GJB2 / CONNEXIN 26 ANTIBODY

SKU: EB07536



SPECIFICATIONS

Formulation Supplied at 0.5 mg/ml in Tris saline, 0.02% sodium azide, pH7.3 with 0.5% bovine serum albumin.

Unit Size 100 µg

Storage Instructions Aliquot and store at -20°C. Minimize freezing and thawing.

Synonym / gap junction protein, beta 2, 26kD (connexin 26)|gap junction protein beta

Alias 2|PPK|NSRD1|KID|HID|DFNB1|DFNA3|CX26|gap junction protein, beta 2, 26kDa (connexin 26)|Connexin

Names 26|GJB2

Usage Flow Cytometry: Flow cytometric analysis of HepG2 cells. Recommended concentration:

Summary 10ug/ml.

Accession ID NP_003995.2

Blocking Peptide EBP07536

Immunogen Peptide with sequence YLLIRYCSGKSKKP, from the C Terminus of the protein sequence according to NP_003995.2.



Peptide Sequence	YLLIRYCSGKSKKP
Purification Method	Purified from goat serum by ammonium sulphate precipitation followed by antigen affinity chromatography using the immunizing peptide.
Shipping Instructions	Refrigerated
Predicted Species	Human, Mouse, Rat, Dog
Reactive Species	Human, Mouse, Rat
Human Gene ID	2706
Mouse Gene ID	14619
Rat Gene ID	394266
Product Grade	https://prod-vector-labs-pimcore-assets.s3.us-east-1.amazonaws.com/assets/products/image/elite_medium.png
ELISA Detection Limit	Antibody detection limit dilution 1:128000.
Western Blot	Approx 25-26kDa band observed in Human Colon, Prostate and Skin , Mouse Brain and in Mouse and Rat Heart lysates (calculated MW of 26.2kDa according to Human NP_003995.2 and 26.4kDa according to Mouse NP_032151.1 and Rat NP_001004099.1) Recommended concentration: 0.01-1µg/ml. Primary incubation 1 hour at room temperature. Negative Control:Human Adipose tissue lysate.
Application Type	Pep-ELISA, WB, FC

DOCUMENTS

- [Data Sheet](#)

GALLERY IMAGES

