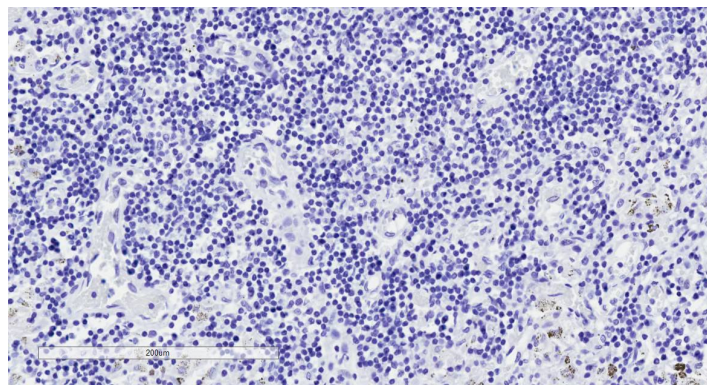


GOAT ANTI-GLI2 ANTIBODY

SKU: EB07136



SPECIFICATIONS

Unit Size	100 µg
Synonym / Alias Names	zinc finger protein GLI2 tax-responsive element-25-bp sequence binding protein tax-responsive element-2 holding protein tax helper protein 2 oncogene GLI2 THP2 GLI-Kruppel family member GLI2 GLI2
Accession ID	NP_005261.2
Blocking Peptide	EBP07136
Immunogen	Peptide with sequence DLKEDLDRDDCKQE, from the internal region of the protein sequence according to NP_005261.2.
Product Comments	This antibody is expected to recognise all four reported isoforms (NP_084655.1, NP_084656.1, NP_084657.1 and NP_005261.1)
Peptide Sequence	DLKEDLDRDDCKQE
Shipping Instructions	Refrigerated
Predicted Species	Human, Mouse
Reactive Species	Human
Human Gene ID	2736
Product Grade	https://prod-vector-labs-pimcore-assets.s3.us-east-1.amazonaws.com/assets/products/image/elite_medium.png

IHC Results	In paraffin embedded Human Lymph Node shows nuclear staining in macrophages. Recommended concentration: 4-6µg/ml.
ELISA	
Detection Limit	Antibody detection limit dilution 1:2000.
Western Blot	Preliminary experiments gave an approx 55kDa band in Human Bone Marrow and Ovary lysates after 1µg/ml antibody staining. Please note that currently we cannot find an explanation in the literature for the band we observe given the calculated size of 168kDa according to NP_005261.2. The 55kDa band was successfully blocked by incubation with the immunizing peptide.
Application Type	Pep-ELISA, IHC

DOCUMENTS

- [Data Sheet](#)

GALLERY IMAGES

