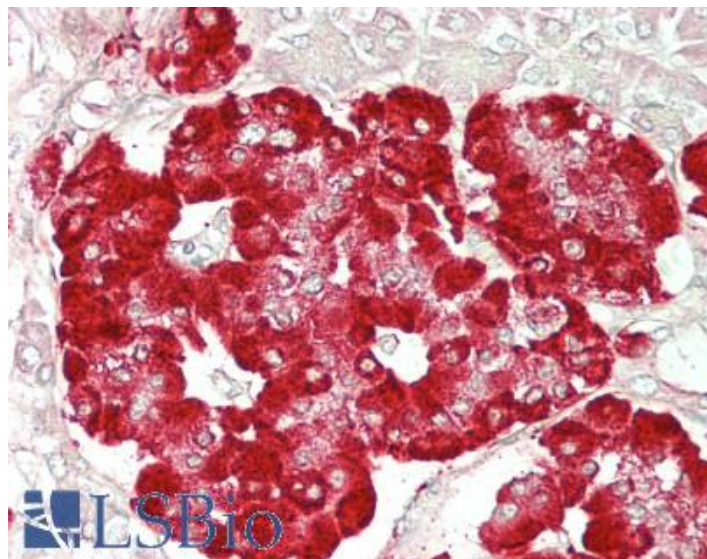


GOAT ANTI-GLP-1-R (MOUSE) ANTIBODY

SKU: EB11675



SPECIFICATIONS

Formulation Supplied at 0.5 mg/ml in Tris saline, 0.02% sodium azide, pH7.3 with 0.5% bovine serum albumin.

Unit Size 100 µg

Storage Instructions Aliquot and store at -20°C. Minimize freezing and thawing.

Synonym /

Alias Names glucagon-like peptide 1 receptor|GLP1Rc|GLP-1-R|GLP-1R|Glp1r|GLP-1 receptor

Accession ID NP_067307.2

Blocking Peptide EBP11675

Immunogen Peptide with sequence C-SKRGERNFPPEEQ, from the internal region of the protein sequence according to NP_067307.2.

Product Comments The immunizing peptide represents part of an extracellular region.

Peptide Sequence C-SKRGERNFPPEEQ

Purification Method Purified from goat serum by ammonium sulphate precipitation followed by antigen affinity chromatography using the immunizing peptide.

Shipping Instructions	Refrigerated
Predicted Species	Mouse
Reactive Species	Human, Mouse
Mouse Gene ID	14652
Product Grade	https://prod-vector-labs-pimcore-assets.s3.us-east-1.amazonaws.com/assets/products/image/elite_medium.png
IHC Results	Paraffin embedded Human Pancreas. Recommended concentration: 5µg/ml.
ELISA	
Detection Limit	Antibody detection limit dilution 1:128000.
Western Blot	Approx 55kDa band observed in Mouse Heart lysates (calculated MW of 53.0kDa according to NP_067307.2). Recommended concentration: 1-3µg/ml. Primary incubation was 1 hour.
Application Type	Pep-ELISA, WB, IHC

DOCUMENTS

- [Data Sheet](#)

GALLERY IMAGES

