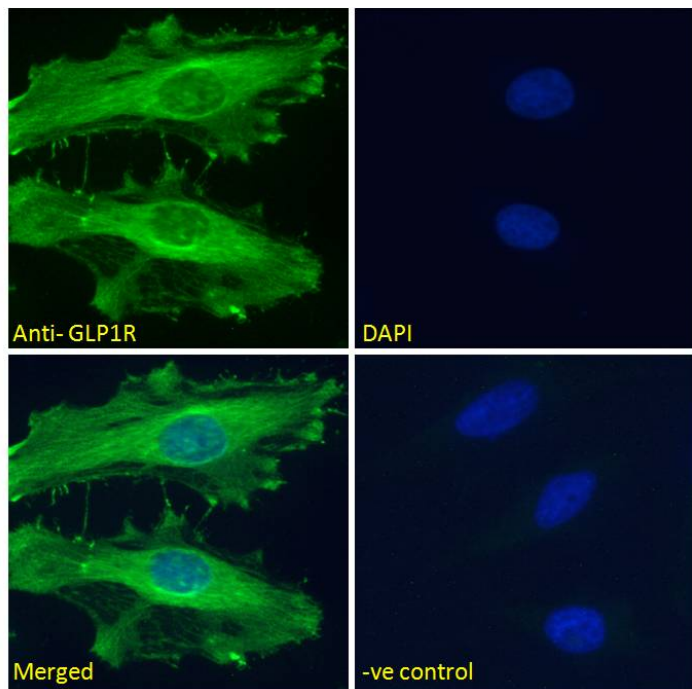


GOAT ANTI-GLP1R ANTIBODY

SKU: EB11676



SPECIFICATIONS

Formulation Supplied at 0.5 mg/ml in Tris saline, 0.02% sodium azide, pH7.3 with 0.5% bovine serum albumin.

Unit Size 100 µg

Storage Instructions Aliquot and store at -20°C. Minimize freezing and thawing.

Synonym /

Alias Names glucagon-like peptide 1 receptor|GLP1Rc|GLP-1-R|GLP-1R|Glp1r|GLP-1 receptor

Usage Summary **Immunofluorescence:** Strong expression of the protein seen in the membranes of HeLa cells. Recommended concentration: 10µg/ml. **Flow Cytometry:** Flow cytometric analysis of HeLa cells. Recommended concentration: 10ug/ml.

Accession ID NP_002053.3

Blocking Peptide EBP11676

Immunogen Peptide with sequence C-QHQWDGLLSYQD, from the internal region of the protein sequence according to NP_002053.3.

Product Comments	The immunizing peptide represents part of an extracellular region.
Peptide Sequence	C-QHQWDGLLSYQD
Purification Method	Purified from goat serum by ammonium sulphate precipitation followed by antigen affinity chromatography using the immunizing peptide.
Shipping Instructions	Refrigerated
Predicted Species	Human, Mouse, Rat, Dog, Pig, Cow
Reactive Species	Human, Rat, Pig
Human Gene ID	2740
Mouse Gene ID	14652
Rat Gene ID	25051
Product Grade	https://prod-vector-labs-pimcore-assets.s3.us-east-1.amazonaws.com/assets/products/image/elite_plus_medium.png
ELISA Detection Limit	Antibody detection limit dilution 1:128000.
Western Blot	Approx 55kDa band observed in Human Hippocampus and in Rat and Pig Brain lysates (calculated MW of 53.0kDa according to Human NP_002053.3, 52.9kDa according to Rat NP_036860.1 and 52.7kDa according to Pig NP_001243523.1). Recommended concentration: 0.1-1µg/ml. Primary incubation 1 hour at room temperature.
Application Type	Pep-ELISA, WB, IF, FC

DOCUMENTS

- [Data Sheet](#)

GALLERY IMAGES

