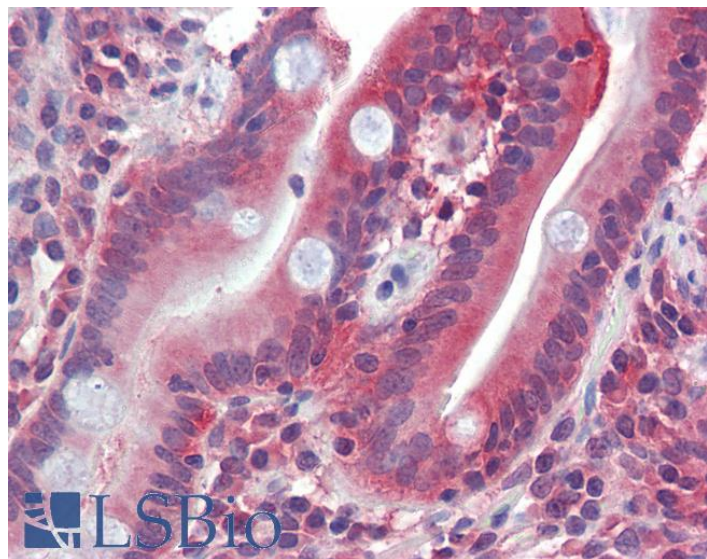


GOAT ANTI-GLUT5 / SLC2A5 ANTIBODY

SKU: EB09482



SPECIFICATIONS

Formulation Supplied at 0.5 mg/ml in Tris saline, 0.02% sodium azide, pH7.3 with 0.5% bovine serum albumin.

Unit Size 100 µg

Storage Instructions Aliquot and store at -20°C. Minimize freezing and thawing.

Synonym / Alias Names SLC2A5|solute carrier family 2 (facilitated glucose/fructose transporter), member 5|GLUT5|OTTHUMP00000001704|glucose transporter-like protein 5|solute carrier family 2 (facilitated glucose transporter), member 5

Accession ID NP_003030.1

Blocking Peptide EBP09482

Immunogen Peptide with sequence C-SEVYPEKEELKE, from the C Terminus of the protein sequence according to NP_003030.1.

Peptide Sequence C-SEVYPEKEELKE

Purification Method Purified from goat serum by ammonium sulphate precipitation followed by antigen affinity chromatography using the immunizing peptide.

Shipping Instructions Refrigerated

Predicted Species	Human
Reactive Species	Human
Human Gene ID	6518
Product Grade	https://prod-vector-labs-pimcore-assets.s3.us-east-1.amazonaws.com/assets/products/image/elite_medium.png
IHC Results	Paraffin embedded Human Small Intestine. Recommended concentration: 2.5µg/ml.
ELISA	
Detection Limit	Antibody detection limit dilution 1:8000.
Western Blot	Preliminary experiments gave an approx 38kDa band in Human Duodenum, Kidney and Skeletal Muscle lysates after 1µg/ml antibody staining. Please note that currently we cannot find an explanation in the literature for the band we observe given the calculated size of 55.0kDa according to NP_003030.1. The 38kDa band was successfully blocked by incubation with the immunizing peptide.
Application Type	Pep-ELISA, IHC

DOCUMENTS

- [Data Sheet](#)

GALLERY IMAGES

