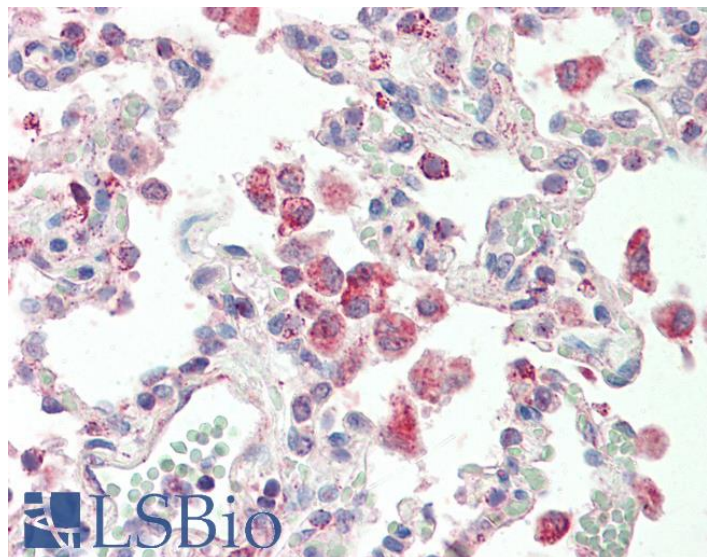


# GOAT ANTI-GLYCINE RECEPTOR, ALPHA 1 (INTRACELLULAR) ANTIBODY

**SKU:** EB11795



## SPECIFICATIONS

**Formulation** Supplied at 0.5 mg/ml in Tris saline, 0.02% sodium azide, pH7.3 with 0.5% bovine serum albumin.

**Unit Size** 100 µg

**Storage Instructions** Aliquot and store at -20°C. Minimize freezing and thawing.

**Synonym / Alias Names** GLYRA1|glycine receptor, alpha 1 subunit|glycine receptor, alpha 1|glycine receptor subunit alpha-1|glycine receptor strychnine-binding subunit|glycine receptor 48 kDa subunit|Gla1

**Accession ID** NP\_037265.1

**Blocking Peptide** EBP11795

**Immunogen** Peptide with sequence CLQAKDGISVKGAN, from the internal region of the protein sequence according to NP\_037265.1.

**Product Comments** The immunizing peptide represents part of the cytoplasmic domain. The antibody is not expected to cross-react with other glycine receptor alpha proteins.

**Peptide Sequence** CLQAKDGISVKGAN

|                              |   |
|------------------------------|---|
| <b>Purification Method</b>   | Purified from goat serum by ammonium sulphate precipitation followed by antigen affinity chromatography using the immunizing peptide.   |
| <b>Shipping Instructions</b> | Refrigerated  |
| <b>Predicted Species</b>     | Human, Mouse, Rat, Dog, Pig, Cow  |
| <b>Reactive Species</b>      | Human, Mouse, Rat   |
| <b>Human Gene ID</b>         | 2741  |
| <b>Mouse Gene ID</b>         | 14654   |
| <b>Rat Gene ID</b>           | 25674   |
| <b>Product Grade</b>         | <a href="https://prod-vector-labs-pimcore-assets.s3.us-east-1.amazonaws.com/assets/products/image/elite_medium.png">https://prod-vector-labs-pimcore-assets.s3.us-east-1.amazonaws.com/assets/products/image/elite_medium.png</a>                               |
| <b>IHC Results</b>           | Paraffin embedded Human Lung and Kidney. Recommended concentration: 5µg/ml.   |
| <b>ELISA Detection Limit</b> | Antibody detection limit dilution 1:128000.   |
| <b>Western Blot</b>          | Approx 60kDa band observed in Mouse and Rat Testis lysates (calculated MW of 51.7kDa according to Mouse NP_065238.2). The observed molecular weight corresponds to the glycosylated form. Recommended concentration: 0.3-1µg/ml. Primary incubation was 1 hour. |
| <b>Application Type</b>      | Pep-ELISA, WB, IHC  |

## DOCUMENTS

- [Data Sheet](#)

## GALLERY IMAGES

