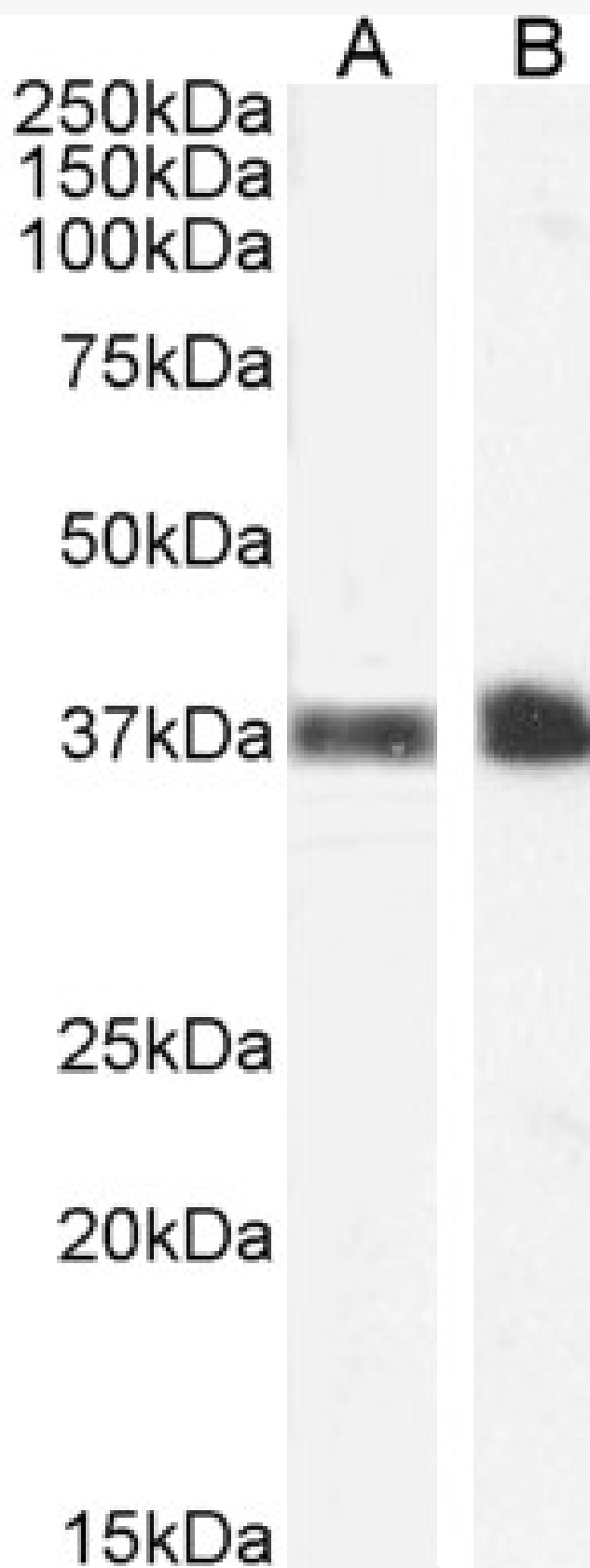


GOAT ANTI-GLYCOPHORIN A ANTIBODY

SKU: EB06947



SPECIFICATIONS

| | |
|------------------------------|--|
| Formulation | Supplied at 0.5 mg/ml in Tris saline, 0.02% sodium azide, pH7.3 with 0.5% bovine serum albumin. |
| Unit Size | 100 µg |
| Storage Instructions | Aliquot and store at -20°C. Minimize freezing and thawing. |
| Synonym / Alias Names | glycophorin MilIII glycophorin A (MN blood group) HGpMilIII GpMilIII CD235a recombinant glycophorin A-B Miltenberger-DR recombinant MiDR glycophorin Sta type C glycophorin SAT glycophorin MiX glycophorin MiV glycophorin Mil glycophorin Erik glycophorin A, GPA glycophorin A erythroid-lineage-specific membrane sialoglycoprotein Mi.V glycoprotein (24 AA) MNS MN HGpSta(C) HGpMiXI HGpMiX HGpMiV GPSAT GPErik GPA GYPA HGNC:4702 glycophorin A (includes MN blood group) |
| Accession ID | NP_002090.2 |
| Blocking Peptide | EBP06947 |
| Immunogen | Peptide with sequence C-SVEIENPETSQ, from the C Terminus of the protein sequence according to NP_002090.2. |
| Peptide Sequence | C-SVEIENPETSQ |
| Purification Method | Purified from goat serum by ammonium sulphate precipitation followed by antigen affinity chromatography using the immunizing peptide. |
| Shipping Instructions | Refrigerated |
| Predicted Species | Human |
| Reactive Species | Human |
| Human Gene ID | 2993 |
| Product Grade | https://prod-vector-labs-pimcore-assets.s3.us-east-1.amazonaws.com/assets/products/image/elite_medium.png |
| ELISA Detection Limit | Antibody detection limit dilution 1:2000. |
| Western Blot | Approx 37-38kDa band observed in Human Peripheral Blood Monocytes and Kidney lysates (calculated MW of 16.4kDa according to NP_002090.2). The observed molecular weight corresponds to earlier findings with different antibodies from other commercial sources and in the literature (Challou, N. et al., PMID: 8204624). Recommended concentration: 1-3µg/ml. Primary incubation 1 hour at room temperature. |
| Application Type | Pep-ELISA, WB |

DOCUMENTS

- [Data Sheet](#)

GALLERY IMAGES

