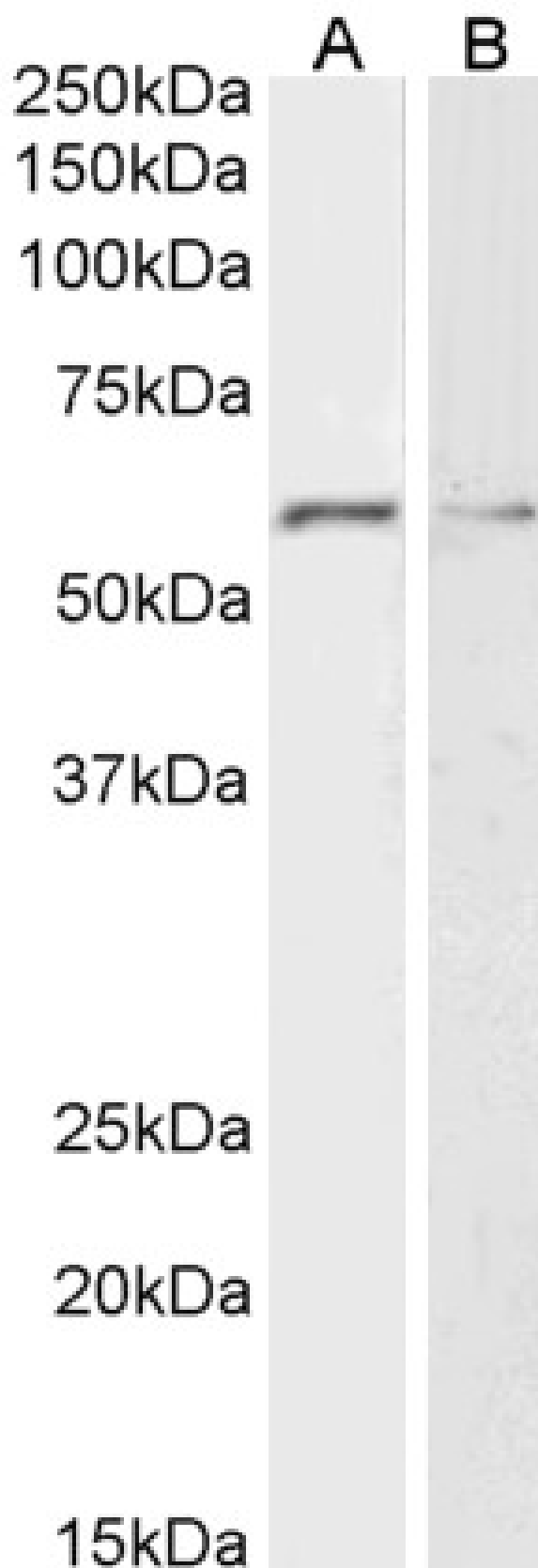


GOAT ANTI-GLYPICAN-1 ANTIBODY

SKU: EB12848



SPECIFICATIONS

Formulation	Supplied at 0.5 mg/ml in Tris saline, 0.02% sodium azide, pH7.3 with 0.5% bovine serum albumin.
Unit Size	100 µg
Storage Instructions	Aliquot and store at -20°C. Minimize freezing and thawing.
Synonym / Alias Names	glypican-1 glypican proteoglycan 1 glypican glypican 1 GPC1
Accession ID	NP_002072.2
Blocking Peptide	EBP12848
Immunogen	Peptide with sequence C-TDKFWGTSGVES, from the internal region of the protein sequence according to NP_002072.2.
Peptide Sequence	C-TDKFWGTSGVES
Purification Method	Purified from goat serum by ammonium sulphate precipitation followed by antigen affinity chromatography using the immunizing peptide.
Shipping Instructions	Refrigerated
Predicted Species	Human
Reactive Species	Human
Human Gene ID	2817
Product Grade	https://prod-vector-labs-pimcore-assets.s3.us-east-1.amazonaws.com/assets/products/image/elite_medium.png
ELISA	
Detection Limit	Antibody detection limit dilution 1:16000.
Western Blot	Approx 60kDa band observed in lysates of cell lines HeLa and K562 (calculated MW of 61.7kDa according to NP_002072.2). Recommended concentration: 1-3µg/ml.
Application Type	Pep-ELISA, WB

DOCUMENTS

- [Data Sheet](#)

GALLERY IMAGES

