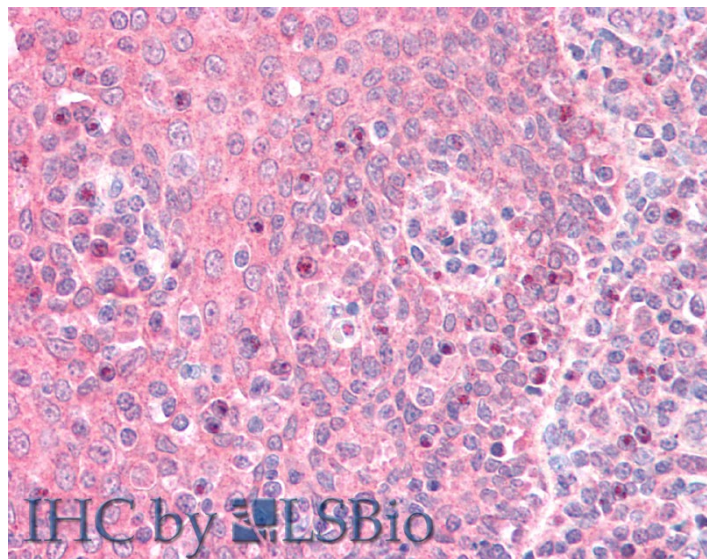


GOAT ANTI-GNAI2 (AA289-299) ANTIBODY

SKU: EB11980



SPECIFICATIONS

Formulation Supplied at 0.5 mg/ml in Tris saline, 0.02% sodium azide, pH7.3 with 0.5% bovine serum albumin.

Unit Size 100 µg

Storage Instructions Aliquot and store at -20°C. Minimize freezing and thawing.

Synonym / Alias Names GNAI2|guanine nucleotide binding protein (G protein), alpha inhibiting activity polypeptide 2|GIP|GNAI2B|H_LUCA15.1|H_LUCA16.1|GTP-binding regulatory protein Gi alpha-2 chain|adenylate cyclase-inhibiting G alpha protein|guanine nucleotide-binding protein G(i) subunit alpha-2|guanine nucleotide-binding protein G(i), alpha-2 subunit

Accession ID NP_002061.1; NP_001159897.1

Blocking Peptide EBP11980

Immunogen Peptide with sequence C-PEYTGANKYDE, from the internal region of the protein sequence according to NP_002061.1; NP_001159897.1.

Product Comments This antibody is expected to recognize both reported isoforms (NP_002061.1; NP_001159897.1).

Peptide Sequence C-PEYTGANKYDE

Purification Method	Purified from goat serum by ammonium sulphate precipitation followed by antigen affinity chromatography using the immunizing peptide.
Shipping Instructions	Refrigerated
Predicted Species	Human, Mouse, Rat, Pig, Cow
Reactive Species	Human
Human Gene ID	2771
Mouse Gene ID	14678
Rat Gene ID	81664
Product Grade	https://prod-vector-labs-pimcore-assets.s3.us-east-1.amazonaws.com/assets/products/image/elite_medium.png
IHC Results	Paraffin embedded Human Thyroid and Tonsil. Recommended concentration: 5µg/ml.
ELISA	
Detection Limit	Antibody detection limit dilution 1:8000.
Western Blot	Approx 38kDa band observed in Human Peripheral Blood Mononucleocytes lysates (calculated MW of 40.5kDa according to NP_002061.1). Recommended concentration: 1-3µg/ml. Primary incubation was 1 hour.
Application Type	Pep-ELISA, WB, IHC

DOCUMENTS

- [Data Sheet](#)

GALLERY IMAGES

