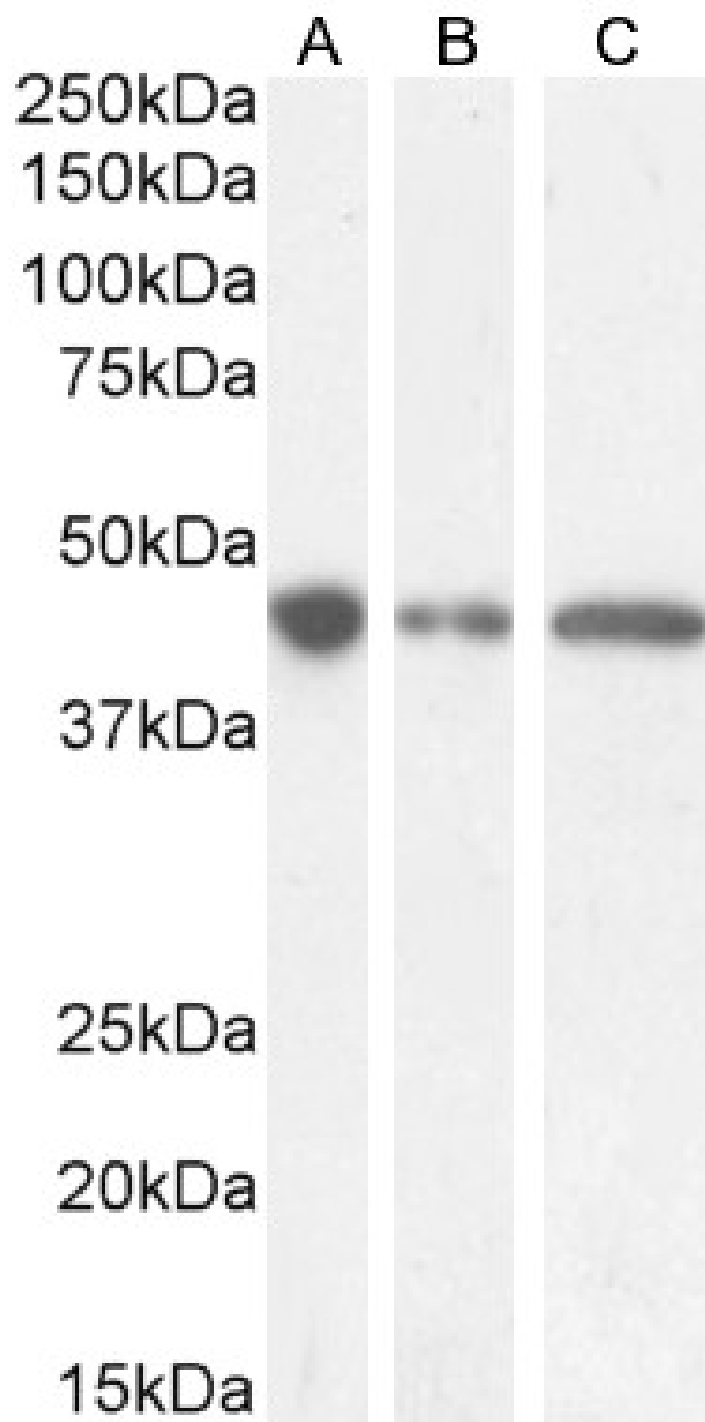


## GOAT ANTI-GNAS ANTIBODY

**SKU:** EB10063



## SPECIFICATIONS

<b>Formulation</b>	Supplied at 0.5 mg/ml in Tris saline, 0.02% sodium azide, pH7.3 with 0.5% bovine serum albumin.
<b>Unit Size</b>	100 µg
<b>Storage Instructions</b>	Aliquot and store at -20°C. Minimize freezing and thawing.
<b>Synonym / Alias Names</b>	GNAS POH PHP1B PHP1A OTTHUMP00000196030 OTTHUMP00000196026 OTTHUMP00000031742 NESP MGC33735 GSP GSA GPSA GNAS1 GNAS complex locus dJ309F20.1.1 C20orf45 AHO adenylate cyclase-stimulating G alpha protein
<b>Accession ID</b>	NP_000507.1; NP_001070956.1; NP_001070957.1
<b>Blocking Peptide</b>	EBP10063
<b>Immunogen</b>	Peptide with sequence C-QAARSNSDGEKATK, from the internal region of the protein sequence according to NP_000507.1; NP_001070956.1; NP_001070957.1.
<b>Product Comments</b>	This antibody is expected to recognize all three reported isoforms NP_000507.1, NP_001070956.1 and NP_536350.2. However, in Mouse it is expected to recognize reported isoforms GNASL (NP_963910.1) and XLas (NP_034439.2) only.
<b>Peptide Sequence</b>	C-QAARSNSDGEKATK
<b>Purification Method</b>	Purified from goat serum by ammonium sulphate precipitation followed by antigen affinity chromatography using the immunizing peptide.
<b>Shipping Instructions</b>	Refrigerated
<b>Predicted Species</b>	Human, Mouse, Rat, Cow
<b>Reactive Species</b>	Human, Mouse, Rat
<b>Human Gene ID</b>	2778
<b>Mouse Gene ID</b>	14683
<b>Rat Gene ID</b>	24896
<b>Product Grade</b>	<a href="https://prod-vector-labs-pimcore-assets.s3.us-east-1.amazonaws.com/assets/products/image/elite_medium.png">https://prod-vector-labs-pimcore-assets.s3.us-east-1.amazonaws.com/assets/products/image/elite_medium.png</a>
<b>ELISA Detection Limit</b>	Antibody detection limit dilution 1:32000.
<b>Western Blot</b>	Approx. 45kDa band observed in Human Cerebellum, Mouse and Rat Brain lysates, and in lysates of cell line KNRK (calculated MW of 45.6kDa according to Human NP_963910.1, Mouse NP_963910.1 and Rat NP_062005.1). Recommended concentration: 0.1-0.5µg/ml. Primary incubation 1 hour at room temperature.
<b>Application Type</b>	Pep-ELISA, WB

## SELECTED REFERENCES

[{"pmid": 30377371, "intro": "**This antibody (previous batch) has been successfully used in the following paper:**", "title": "A high-throughput pipeline for validation of antibodies", "author": "Krzysztof Sikorski, Adi Mehta, Marit Inngjerdigen, Flourina Thakor, Simon Kling, Tomas Kalina, Tuula A. Nyman, Maria Ekman Stensland, Wei Zhou, Gustavo A. De Souza, Lars Holden, Jan Stuchly, Markus Templin and Fridtjof Lund-Johansen", "journal": "Nat Methods. 2018"}]

Nov;15(11):909-912"}]

## DOCUMENTS

- [Data Sheet](#)

## GALLERY IMAGES

