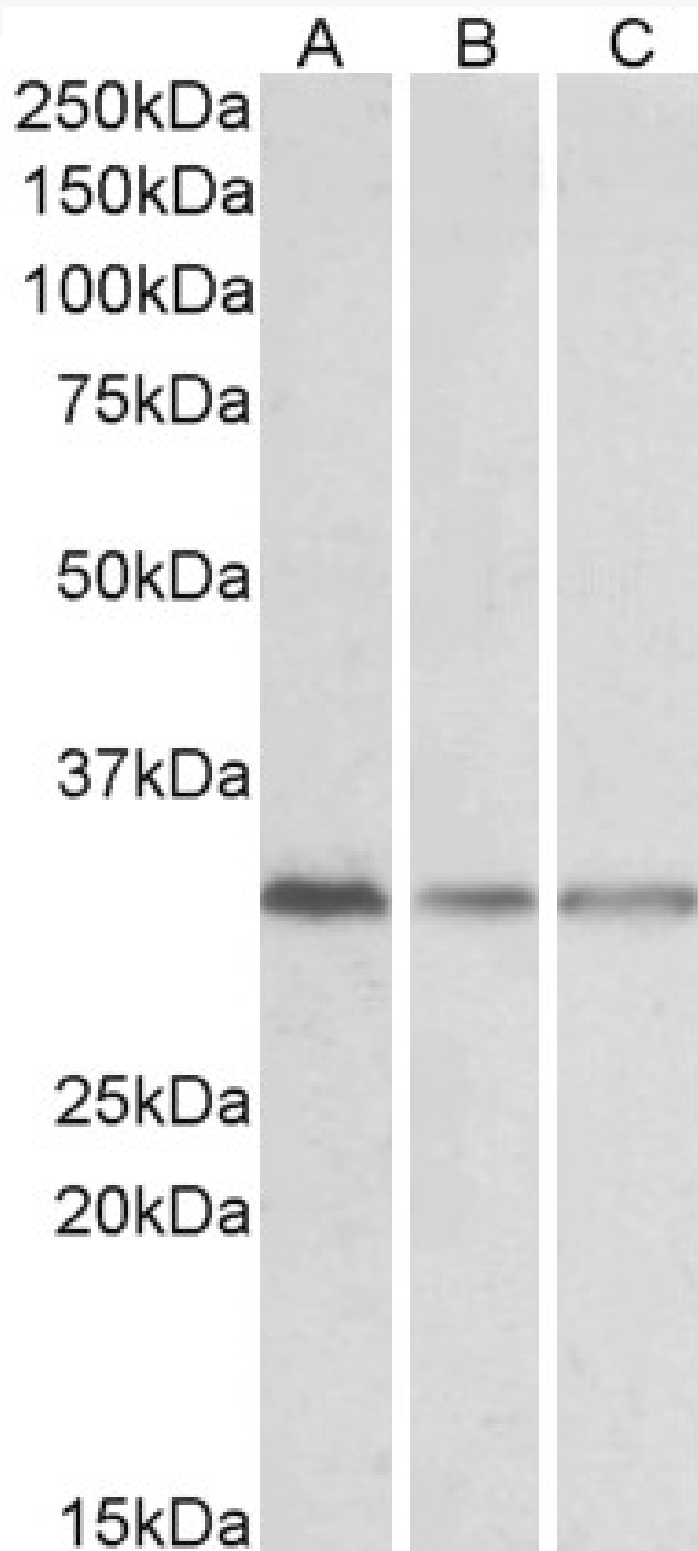


GOAT ANTI-GNB2L1 ANTIBODY

SKU: EB10690



SPECIFICATIONS

Formulation	Supplied at 0.5 mg/ml in Tris saline, 0.02% sodium azide, pH7.3 with 0.5% bovine serum albumin.
Unit Size	100 µg
Storage	Aliquot and store at -20°C. Minimize freezing and thawing.
Instructions	receptor of activated protein kinase C 1 protein homologous to chicken B complex protein, guanine nucleotide binding proliferation-inducing gene 21 lung cancer oncogene 7 human lung cancer oncogene 7 protein guanine nucleotide-binding protein subunit beta-like protein 12.3 guanine nucleotide-binding protein subunit beta-2-like 1 cell proliferation-inducing gene 21 protein Receptor for Activated C Kinase 1 OTTHUMP00000223930 RACK1 PIG21 HLC-7 H12.3 Gnb2-rs1 guanine nucleotide binding protein (G protein), beta polypeptide 2-like 1 GNB2L1
Synonym / Alias Names	
Accession ID	NP_006089.1
Blocking Peptide	EBP10690
Immunogen	Peptide with sequence NTLGVCKYTVQDESH, from the internal region of the protein sequence according to NP_006089.1.
Peptide Sequence	NTLGVCKYTVQDESH
Purification Method	Purified from goat serum by ammonium sulphate precipitation followed by antigen affinity chromatography using the immunizing peptide.
Shipping Instructions	Refrigerated
Predicted Species	Human, Mouse, Rat, Dog, Cow
Reactive Species	Human, Mouse, Rat
Human Gene ID	10399
Mouse Gene ID	14694
Rat Gene ID	83427
Product Grade	https://prod-vector-labs-pimcore-assets.s3.us-east-1.amazonaws.com/assets/products/image/elite_medium.png
IHC Results	Paraffin embedded Human Small Intestine. Recommended concentration: 3.75µg/ml.
ELISA	
Detection Limit	Antibody detection limit dilution 1:128000.
Western Blot	Approx 33kDa band observed in Human Lymph Nodes, in Mouse and Rat Spleen lysates and in lysates of many cell lines (calculated MW of 35.1kDa according to NP_006089.1). Recommended concentration: 0.1-0.3µg/ml. Primary incubation was 1 hour.
Application Type	Pep-ELISA, WB, IHC

DOCUMENTS

- [Data Sheet](#)

GALLERY IMAGES

