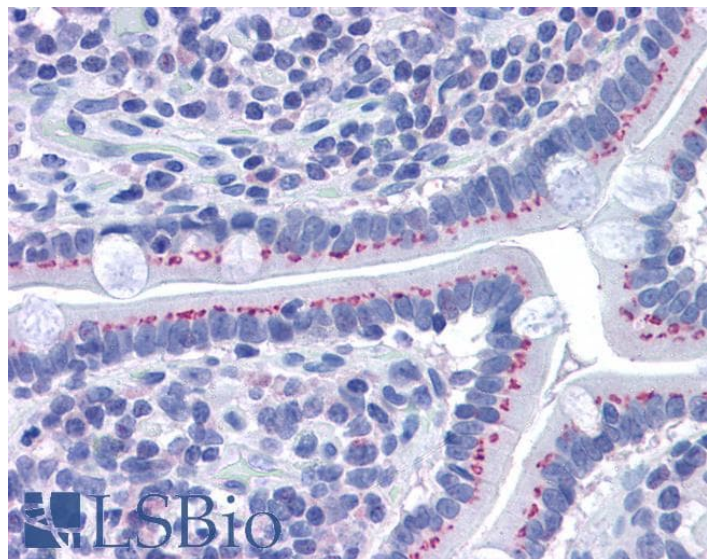


# GOAT ANTI-GOLPH2 ANTIBODY

**SKU:** EB05667



## SPECIFICATIONS

<b>Formulation</b>	Supplied at 0.5 mg/ml in Tris saline, 0.02% sodium azide, pH7.3 with 0.5% bovine serum albumin.
<b>Unit Size</b>	100 µg
<b>Storage Instructions</b>	Aliquot and store at -20°C. Minimize freezing and thawing.
<b>Synonym / Alias Names</b>	golgi protein, 73-kD bA379P1.3 PSEC0257 FLJ23608 FLJ22634 C9orf155 RP11-379P1.3 golgi membrane protein 1 golgi membrane protein GP73 GP73 golgi phosphoprotein 2 GOLPH2 GOLM1
<b>Accession ID</b>	NP_057632.2; NP_808800.1
<b>Blocking Peptide</b>	EBP05667
<b>Immunogen</b>	Peptide with sequence C-NLLDQREKRNHTL, from the C Terminus of the protein sequence according to NP_057632.2; NP_808800.1.
<b>Product Comments</b>	Both variants (NP_057632.2; NP_808800.1) encode the same isoform
<b>Peptide Sequence</b>	C-NLLDQREKRNHTL
<b>Purification Method</b>	Purified from goat serum by ammonium sulphate precipitation followed by antigen affinity chromatography using the immunizing peptide.

<b>Shipping Instructions</b>	Refrigerated
<b>Predicted Species</b>	Human
<b>Reactive Species</b>	Human
<b>Human Gene ID</b>	51280
<b>Product Grade</b>	<a href="https://prod-vector-labs-pimcore-assets.s3.us-east-1.amazonaws.com/assets/products/image/elite_medium.png">https://prod-vector-labs-pimcore-assets.s3.us-east-1.amazonaws.com/assets/products/image/elite_medium.png</a>
<b>IHC Results</b>	In paraffin embedded Human Prostate shows luminal staining of secretory cells in the glands. Recommended concentration: 3-6µg/ml. Paraffin embedded Human Uterus and Small Intestine. Recommended concentration: 3.75µg/ml.
<b>ELISA</b>	
<b>Detection Limit</b>	Antibody detection limit dilution 1:16000.
<b>Application Type</b>	Pep-ELISA, IHC

## DOCUMENTS

- [Data Sheet](#)

## GALLERY IMAGES

