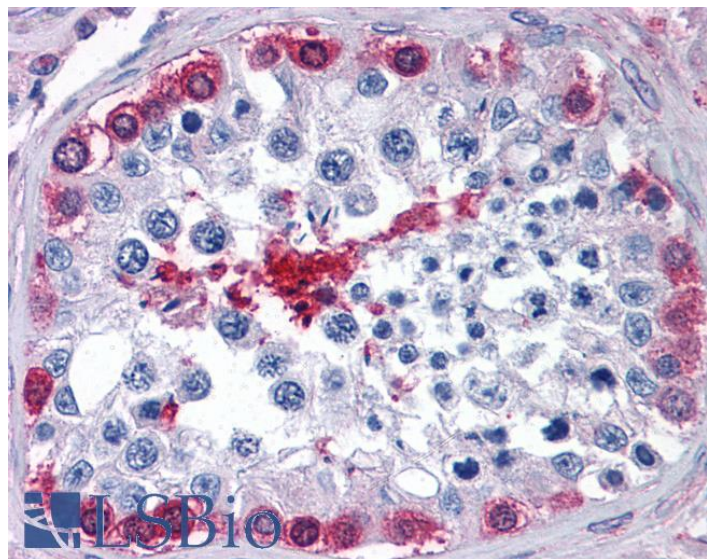


GOAT ANTI-GPI / NEUROLEUKIN (AA81-93) ANTIBODY

SKU: EB09738



SPECIFICATIONS

Formulation Supplied at 0.5 mg/ml in Tris saline, 0.02% sodium azide, pH7.3 with 0.5% bovine serum albumin.

Unit Size 100 µg

Storage Instructions Aliquot and store at -20°C. Minimize freezing and thawing.

Synonym / Alias Names sperm antigen-36|phosphosaccharomutase|phosphohexose isomerase|phosphohexomutase|phosphoglucose isomerase|oxoisomerase|neuroleukin|hexosephosphate isomerase|hexose monophosphate isomerase|glucose-6-phosphate isomerase|autocrine motility factor|SA-36|PGI|NLK|GNPI|AMF|glucose phosphate isomerase|GPI

Accession ID NP_000166.2

Blocking Peptide EBP09738

Immunogen Peptide with sequence C-RERMFNGEKINYT, from the internal region (near N Terminus) of the protein sequence according to NP_000166.2.

Peptide Sequence C-RERMFNGEKINYT

Purification Method Purified from goat serum by ammonium sulphate precipitation followed by antigen affinity chromatography using the immunizing peptide.

Shipping Instructions	Refrigerated
Predicted Species	Human
Reactive Species	Human
Human Gene ID	2821
Product Grade	https://prod-vector-labs-pimcore-assets.s3.us-east-1.amazonaws.com/assets/products/image/elite_medium.png
IHC Results	Paraffin embedded Human Testis, Thyroid and Kidney. Recommended concentration: 3.75µg/ml.
ELISA	
Detection Limit	Antibody detection limit dilution 1:128000.
Western Blot	Approx 60kDa band observed in Human Heart lysates and approx 55kDa observed in lysates of cell lines HeLa, A431, A549, MCF7, Jurkat and K562 (calculated MW of 63.1kDa according to NP_000166.2). Recommended concentration: 0.1-0.3µg/ml. Primary incubation was 1 hour.
Application Type	Pep-ELISA, WB, IHC

DOCUMENTS

- [Data Sheet](#)

GALLERY IMAGES

