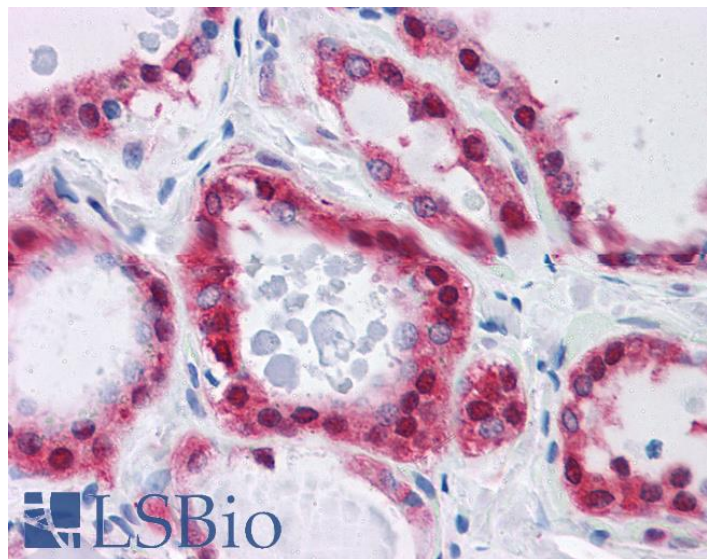


# GOAT ANTI-GPI / NEUROLEUKIN ANTIBODY

**SKU:** EB09739



## SPECIFICATIONS

**Formulation** Supplied at 0.5 mg/ml in Tris saline, 0.02% sodium azide, pH7.3 with 0.5% bovine serum albumin.

**Unit Size** 100 µg

**Storage Instructions** Aliquot and store at -20°C. Minimize freezing and thawing.

**Synonym / Alias Names** sperm antigen-36|phosphosaccharomutase|phosphohexose isomerase|phosphohexomutase|phosphoglucose isomerase|oxoisomerase;|neuroleukin|hexosephosphate isomerase;|hexose monophosphate isomerase|glucose-6-phosphate isomerase|autocrine motility factor;|SA-36|PGI|NLK|GNPI|AMF|glucose phosphate isomerase|GPI

**Accession ID** NP\_000166.2

**Blocking Peptide** EBP09739

**Immunogen** Peptide with sequence C-YREHRSELNLRR, from the internal region (near N Terminus) of the protein sequence according to NP\_000166.2.

**Peptide Sequence** C-YREHRSELNLRR

**Purification Method** Purified from goat serum by ammonium sulphate precipitation followed by antigen affinity chromatography using the immunizing peptide.

<b>Shipping Instructions</b>	Refrigerated
<b>Predicted Species</b>	Human
<b>Reactive Species</b>	Human
<b>Human Gene ID</b>	2821
<b>Product Grade</b>	<a href="https://prod-vector-labs-pimcore-assets.s3.us-east-1.amazonaws.com/assets/products/image/elite_medium.png">https://prod-vector-labs-pimcore-assets.s3.us-east-1.amazonaws.com/assets/products/image/elite_medium.png</a>
<b>IHC Results</b>	Paraffin embedded Human Testis, Thyroid and Kidney. Recommended concentration: 3.75µg/ml.
<b>ELISA</b>	
<b>Detection Limit</b>	Antibody detection limit dilution 1:128000.
<b>Western Blot</b>	Approx 60kDa band observed in Human Heart lysates (calculated MW of 63.1kDa according to NP_000166.2). Recommended concentration: 0.01-0.03µg/ml. Primary incubation was hour.
<b>Application Type</b>	Pep-ELISA, WB, IHC

## DOCUMENTS

- [Data Sheet](#)

## GALLERY IMAGES

