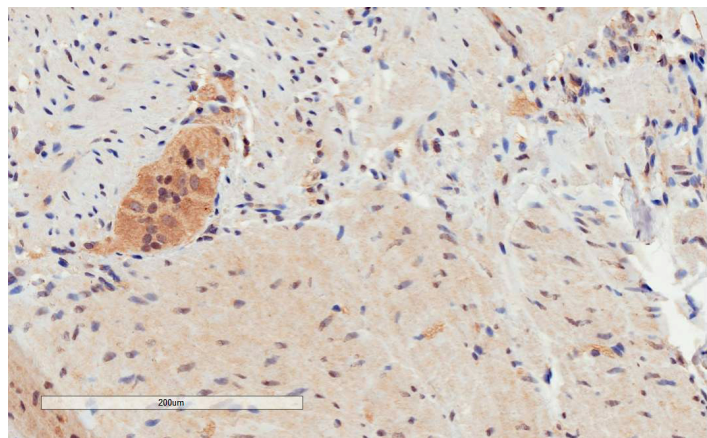


# GOAT ANTI-GPR120 ANTIBODY

**SKU:** EB08837



## SPECIFICATIONS

**Formulation** Supplied at 0.5 mg/ml in Tris saline, 0.02% sodium azide, pH7.3 with 0.5% bovine serum albumin.

**Unit Size** 100 μg

**Storage Instructions** Aliquot and store at -20°C. Minimize freezing and thawing.

**Synonym / Alias Names** G-protein-coupled receptor GT01|G protein-coupled receptor PGR4|G protein-coupled receptor 129|PGR4|MGC119984|GT01|GPR129|G protein-coupled receptor 120|GPR120

**Accession ID** NP\_859529.2

**Blocking Peptide** EBP08837

**Immunogen** Peptide with sequence C-YSESHQIRVSQQD, from the internal region of the protein sequence according to NP\_859529.2.

**Peptide Sequence** C-YSESHQIRVSQQD

**Purification Method** Purified from goat serum by ammonium sulphate precipitation followed by antigen affinity chromatography using the immunizing peptide.

**Shipping Instructions** Refrigerated

**Predicted Species** Human, Mouse, Rat

**Reactive Species** Human

<b>Human Gene ID</b>	338557
<b>Mouse Gene ID</b>	107221
<b>Rat Gene ID</b>	294075
<b>Product Grade</b>	<a href="https://prod-vector-labs-pimcore-assets.s3.us-east-1.amazonaws.com/assets/products/image/elite_medium.png">https://prod-vector-labs-pimcore-assets.s3.us-east-1.amazonaws.com/assets/products/image/elite_medium.png</a>
<b>IHC Results</b>	In paraffin embedded Human Colon shows specific staining of Lymphoid Aggregates. Recommended concentration: 2-4µg/ml.
<b>ELISA Detection Limit</b>	Antibody detection limit dilution 1:16000.
<b>Western Blot</b>	Preliminary experiments in Human Colon and Duodenum lysates gave no specific signal but low background (at antibody concentration up to 1µg/ml).
<b>Application Type</b>	Pep-ELISA, IHC

## DOCUMENTS

- [Data Sheet](#)

## GALLERY IMAGES

