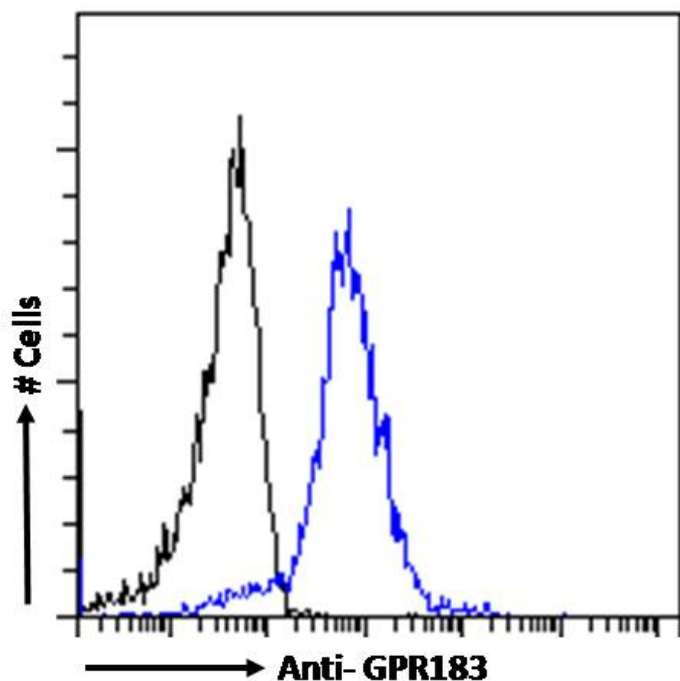


GOAT ANTI-GPR183 ANTIBODY

SKU: EB10541



SPECIFICATIONS

Formulation Supplied at 0.5 mg/ml in Tris saline, 0.02% sodium azide, pH7.3 with 0.5% bovine serum albumin.

Unit Size 100 µg

Storage Instructions Aliquot and store at -20°C. Minimize freezing and thawing.

Synonym / Alias Names epstein-Barr virus-induced G-protein coupled receptor 2| G-protein coupled receptor 183| Epstein-Barr virus induced gene 2 (lymphocyte-specific G protein-coupled receptor)| EBV-induced G-protein coupled receptor 2| EB12| G protein-coupled receptor 183|GPR183

Usage Summary **Immunofluorescence:** Strong expression of the protein seen in A431 and U2OS cells. Recommended concentration: 10µg/ml. **Flow Cytometry:** Flow cytometric analysis of A431 cells. Recommended concentration: 10ug/ml.

Accession ID NP_004942.1

Blocking Peptide EBP10541

Immunogen	Peptide with sequence C-NKIKRIEHAK, from the internal region of the protein sequence according to NP_004942.1.
Peptide Sequence	C-NKIKRIEHAK
Purification Method	Purified from goat serum by ammonium sulphate precipitation followed by antigen affinity chromatography using the immunizing peptide.
Shipping Instructions	Refrigerated
Predicted Species	Human
Reactive Species	Human
Human Gene ID	1880
Mouse Gene ID	321019
Rat Gene ID	679975
Product Grade	https://prod-vector-labs-pimcore-assets.s3.us-east-1.amazonaws.com/assets/products/image/elite_medium.png
ELISA	
Detection Limit	Antibody detection limit dilution 1:32000.
Application Type	Pep-ELISA, IF, FC

DOCUMENTS

- [Data Sheet](#)

GALLERY IMAGES

