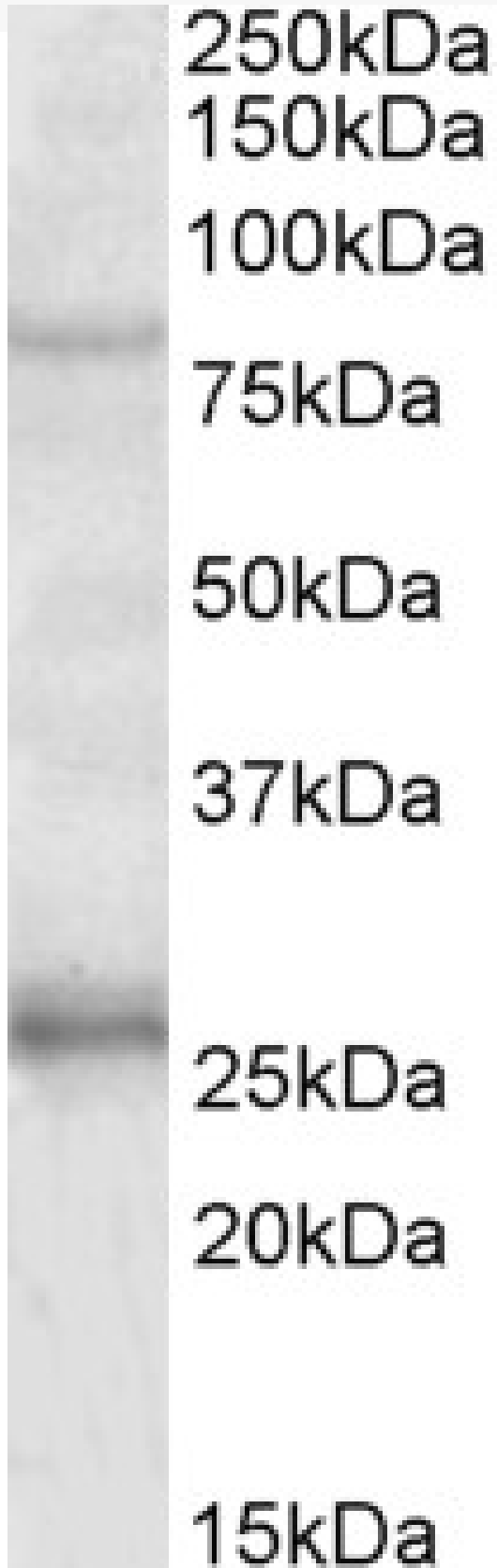


GOAT ANTI-GPRIN3 ANTIBODY

SKU: EB10209



SPECIFICATIONS

Formulation	Supplied at 0.5 mg/ml in Tris saline, 0.02% sodium azide, pH7.3 with 0.5% bovine serum albumin.
Unit Size	100 µg
Storage Instructions	Aliquot and store at -20°C. Minimize freezing and thawing.
Synonym / Alias Names	GPRIN3 GRIN3 GPRIN family member 3 G protein-regulated inducer of neurite outgrowth 3 FLJ42625
Accession ID	NP_938022.2
Blocking Peptide	EBP10209
Immunogen	Peptide with sequence C-TLEENRQTKT, from the internal region of the protein sequence according to NP_938022.2.
Peptide Sequence	C-TLEENRQTKT
Purification Method	Purified from goat serum by ammonium sulphate precipitation followed by antigen affinity chromatography using the immunizing peptide.
Shipping Instructions	Refrigerated
Predicted Species	Human, Cow
Reactive Species	Human
Human Gene ID	285513
Product Grade	https://prod-vector-labs-pimcore-assets.s3.us-east-1.amazonaws.com/assets/products/image/elite_medium.png
ELISA Detection Limit	Antibody detection limit dilution 1:4000.
Western Blot	Approx 80kDa band observed in Human Brain (Hippocampus) lysates (calculated MW of 82.4kDa according to NP_938022.2). Recommended concentration: 1-3µg/ml. An additional band of unknown identity was also consistently observed at 26kDa. This band was successfully blocked by incubation with the immunizing peptide.
Application Type	Pep-ELISA, WB

DOCUMENTS

- [Data Sheet](#)

GALLERY IMAGES

