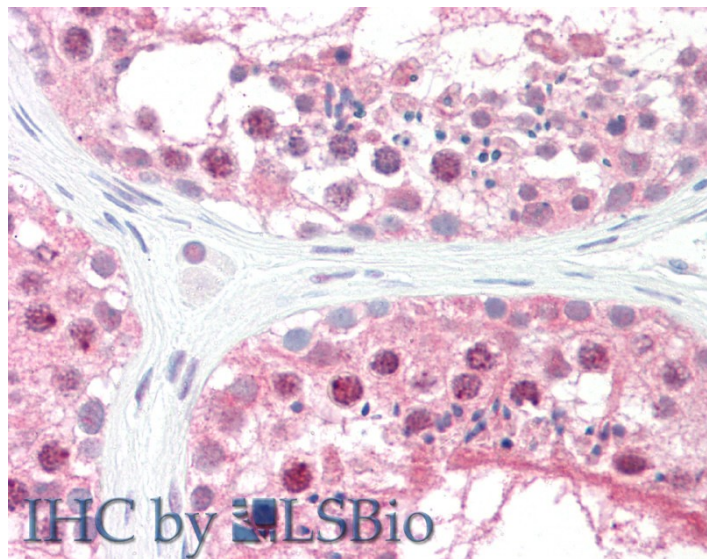


GOAT ANTI-GPS1 / COPS1 ANTIBODY

SKU: EB05952



SPECIFICATIONS

Formulation Supplied at 0.5 mg/ml in Tris saline, 0.02% sodium azide, pH7.3 with 0.5% bovine serum albumin.

Unit Size 100 µg

Storage Instructions Aliquot and store at -20°C. Minimize freezing and thawing.

Synonym /

Alias GPS1|COPS1|G protein pathway suppressor 1|Arabidopsis FUS6/COP11 homolog|CSN1|MGC71287

Names

Accession ID NP_997657.1; NP_004118.3

Blocking Peptide EBP05952

Immunogen Peptide with sequence C-PANSQSRMSTNM, from the C Terminus of the protein sequence according to NP_997657.1; NP_004118.3.

Product Comments This antibody is expected to recognise isoform 1 (NP_997657.1) and isoform 2 (NP_004118.3).

Peptide Sequence C-PANSQSRMSTNM

Purification Method Purified from goat serum by ammonium sulphate precipitation followed by antigen affinity chromatography using the immunizing peptide.

Shipping Instructions	Refrigerated
Predicted Species	Human, Mouse, Rat, Dog, Cow
Reactive Species	Human
Human Gene ID	2873
Mouse Gene ID	209318
Rat Gene ID	117039
Product Grade	https://prod-vector-labs-pimcore-assets.s3.us-east-1.amazonaws.com/assets/products/image/elite_medium.png
IHC Results	Paraffin embedded Human Prostate, Testis and Tonsil. Recommended concentration: 5µg/ml.
ELISA	
Detection Limit	Antibody detection limit dilution 1:32000.
Western Blot	Approx 55kDa band observed in Human Testis lysate (predicted MW of 58kDa according to NP_004118). Recommended for use at 0.5µg/ml. Primary incubation was for 1 hour.
Application Type	Pep-ELISA, WB, IHC

DOCUMENTS

- [Data Sheet](#)

GALLERY IMAGES

