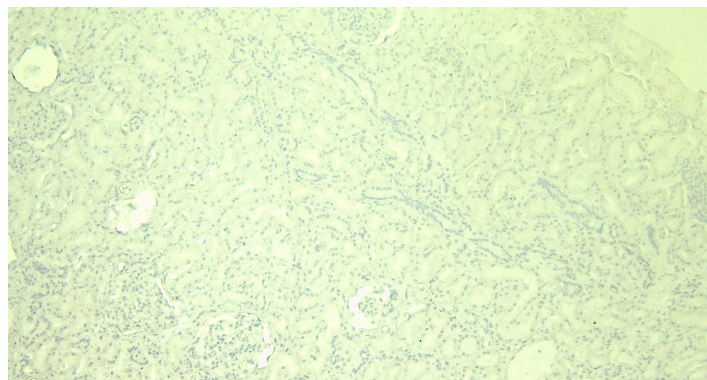


# GOAT ANTI-GPX3 ANTIBODY

**SKU:** EB07685



## SPECIFICATIONS

**Formulation** Supplied at 0.5 mg/ml in Tris saline, 0.02% sodium azide, pH7.3 with 0.5% bovine serum albumin.

**Unit Size** 100 µg

**Storage Instructions** Aliquot and store at -20°C. Minimize freezing and thawing.

**Synonym / Alias Names** plasma glutathione peroxidase 3|extracellular glutathione peroxidase|GSHPx-P|GSHPx-3|GPx-P|glutathione peroxidase 3 (plasma)|GPX3

**Accession ID** NP\_002075.2

**Blocking Peptide** EBP07685

**Immunogen** Peptide with sequence C-NQFGKQEPGENSE, from the internal region of the protein sequence according to NP\_002075.2.

**Product Comments** This antibody may cross-react with epididymis-specific GPX5 and olfactory epithelium-specific GPX6

**Peptide Sequence** C-NQFGKQEPGENSE

**Purification Method** Purified from goat serum by ammonium sulphate precipitation followed by antigen affinity chromatography using the immunizing peptide.

**Shipping Instructions** Refrigerated

**Predicted Species** Human, Mouse, Rat, Dog, Pig

**Reactive Species** Human, Mouse

<b>Human Gene ID</b>	2878
<b>Mouse Gene ID</b>	14778
<b>Rat Gene ID</b>	64317
<b>Product Grade</b>	<a href="https://prod-vector-labs-pimcore-assets.s3.us-east-1.amazonaws.com/assets/products/image/elite_medium.png">https://prod-vector-labs-pimcore-assets.s3.us-east-1.amazonaws.com/assets/products/image/elite_medium.png</a>
<b>IHC Results</b>	Paraffin embedded Human Kidney. Recommended concentration: 3-5µg/ml.
<b>ELISA</b>	
<b>Detection Limit</b>	Antibody detection limit dilution 1:8000.
<b>Western Blot</b>	Approx 26kDa band observed in Mouse Heart lysates (calculated MW of 27.7kDa according to Mouse NP_001077398.1 [isoform1] and 25.4kDa according to Mouse NP_032187.2 [isoform 2] ). Recommended concentration: 1-3µg/ml. Primary incubation 1 hour at room temperature.
<b>Application Type</b>	Pep-ELISA, WB, IHC

## DOCUMENTS

- [Data Sheet](#)

## GALLERY IMAGES

