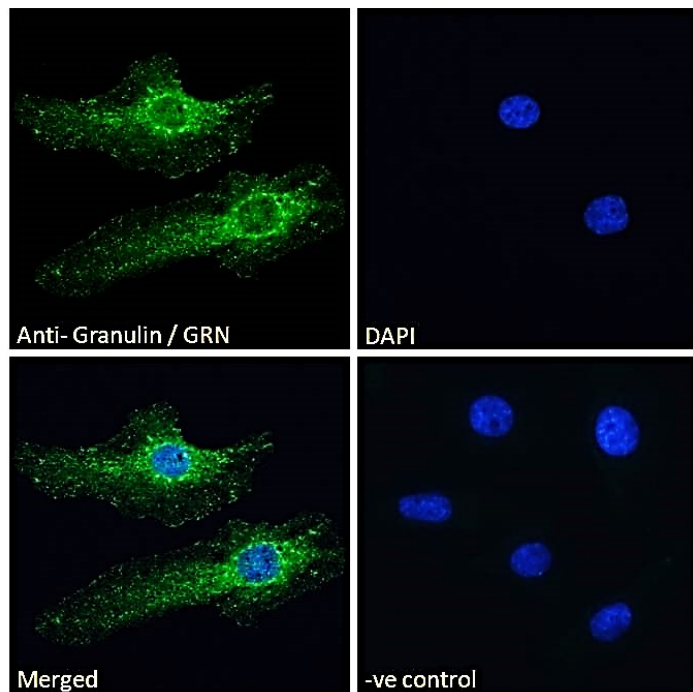


GOAT ANTI-GRANULIN / GRN ANTIBODY

SKU: EB08934



SPECIFICATIONS

Formulation Supplied at 0.5 mg/ml in Tris saline, 0.02% sodium azide, pH7.3 with 0.5% bovine serum albumin.

Unit Size 100 µg

Storage Instructions Aliquot and store at -20°C. Minimize freezing and thawing.

Synonym / Alias Names progranulin|proepithelin|granulin-epithelin|acrogranin|PC cell-derived growth factor|PGRN|PEPI|PCDGF|GP88|GEP|granulin|GRN

Usage Summary **Immunofluorescence:** Strong expression of the protein seen in the vesicles/cytoplasm of HeLa cells. Recommended concentration: 10µg/ml.

Accession ID NP_002078.1

Blocking Peptide EBP08934

Immunogen Peptide with sequence QSKCLSKENATTD , from the internal region of the protein sequence according to NP_002078.1.

Peptide Sequence	QSKCLSKENATTD
Purification Method	Purified from goat serum by ammonium sulphate precipitation followed by antigen affinity chromatography using the immunizing peptide.
Shipping Instructions	Refrigerated
Predicted Species	Human
Reactive Species	Human
Human Gene ID	2896
Product Grade	https://prod-vector-labs-pimcore-assets.s3.us-east-1.amazonaws.com/assets/products/image/elite_medium.png
ELISA Detection Limit	Antibody detection limit dilution 1:1000.
Western Blot	Preliminary experiments showed a band at approx 65kDa in Human Bone Marrow and Testes lysates after 2µg/ml antibody staining (calculated MW of 63.5kDa according to NP_002078.1). Primary incubation 1 hour at room temperature.
Application Type	Pep-ELISA, IF

DOCUMENTS

- [Data Sheet](#)

GALLERY IMAGES

