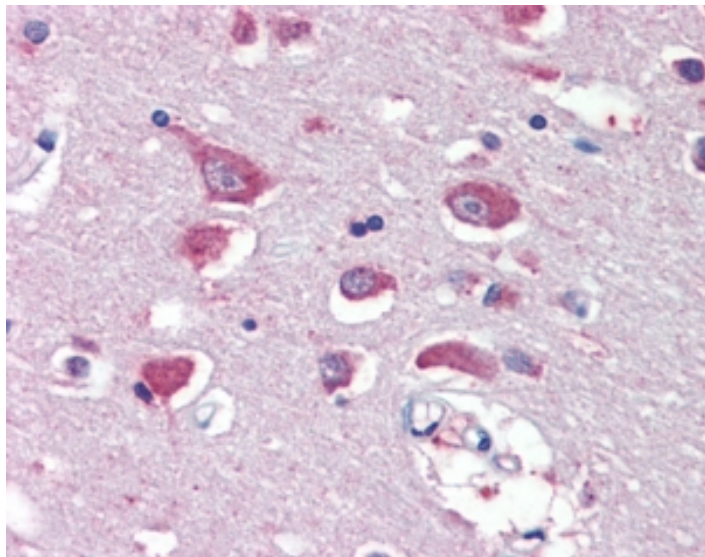


GOAT ANTI-GRIA4 ANTIBODY

SKU: EB08518



SPECIFICATIONS

| | |
|------------------------------|--|
| Formulation | Supplied at 0.5 mg/ml in Tris saline, 0.02% sodium azide, pH7.3 with 0.5% bovine serum albumin. |
| Unit Size | 100 µg |
| Storage Instructions | Aliquot and store at -20°C. Minimize freezing and thawing. |
| Synonym / Alias Names | AMPA-selective glutamate receptor 4 GLURD GLUR4C GLUR4 glutamate receptor, ionotropic, AMPA 4 GRIA4 |
| Accession ID | NP_000820.3; NP_001070711.2; NP_001070712.1 |
| Blocking Peptide | EBP08518 |
| Immunogen | Peptide with sequence C-KKLDQREYPGSETP, from the internal region of the protein sequence according to NP_000820.3; NP_001070711.2; NP_001070712.1. |
| Product Comments | This antibody is expected to recognize all reported isoforms (NP_000820.3; NP_001070711.1; NP_001070712.1). Reported variants NP_001070712.1 and NP_001106283.1 represent identical protein. |
| Peptide Sequence | C-KKLDQREYPGSETP |
| Purification Method | Purified from goat serum by ammonium sulphate precipitation followed by antigen affinity chromatography using the immunizing peptide. |

| | |
|------------------------------|---|
| Shipping Instructions | Refrigerated |
| Predicted Species | Human, Mouse, Rat, Cow |
| Reactive Species | Human |
| Human Gene ID | 2893 |
| Mouse Gene ID | 14802 |
| Rat Gene ID | 29629 |
| Product Grade | https://prod-vector-labs-pimcore-assets.s3.us-east-1.amazonaws.com/assets/products/image/elite_medium.png |
| IHC Results | In paraffin embedded Human Cortex shows cytoplasm staining of neuronal cells. Recommended concentration, 5-10µg/ml. |
| ELISA | |
| Detection Limit | Antibody detection limit dilution 1:128000. |
| Western Blot | Approx.100kDa band observed in Human Brain (Cerebellum) lysates (calculated MW of 99.2kDa according to NP_001070711.2). Recommended concentration: 1-2µg/ml. Primary incubation 1 hour at room temperature. |
| Application Type | Pep-ELISA, WB, IHC |

DOCUMENTS

- [Data Sheet](#)

GALLERY IMAGES

