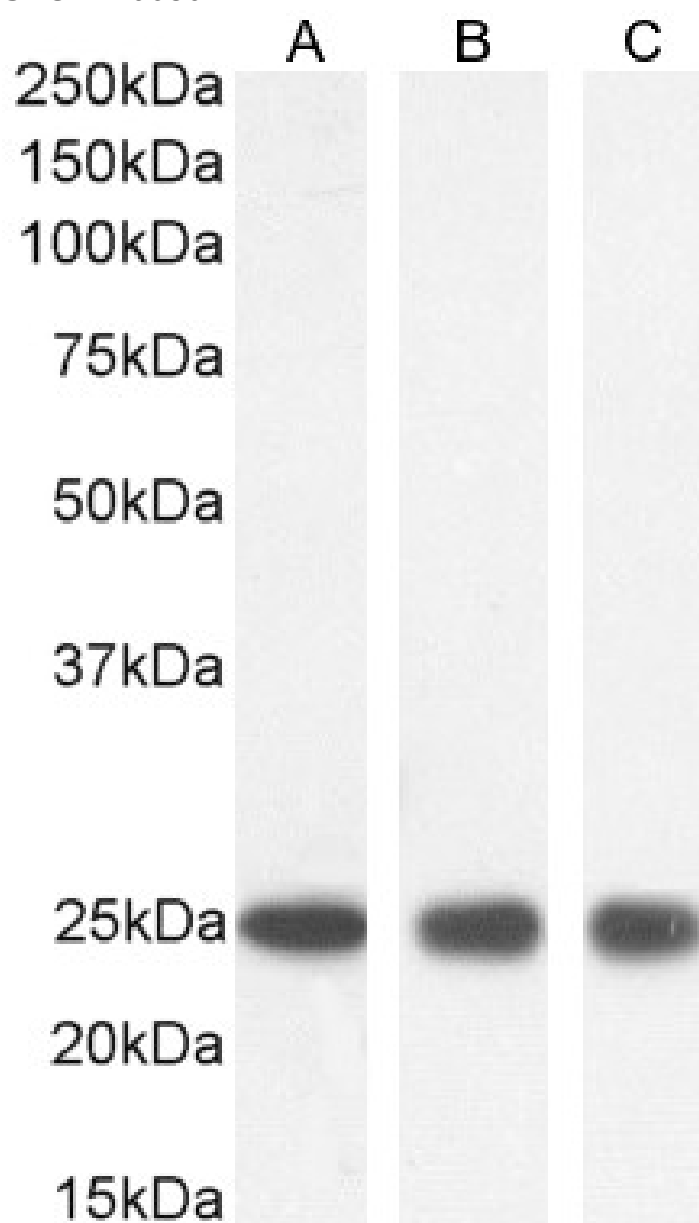


GOAT ANTI-GST3 / GSTP1 ANTIBODY

SKU: EB06802



SPECIFICATIONS

Formulation	Supplied at 0.5 mg/ml in Tris saline, 0.02% sodium azide, pH7.3 with 0.5% bovine serum albumin.
Unit Size	100 µg
Storage	
Instructions	Aliquot and store at -20°C. Minimize freezing and thawing.
Synonym / Alias	glutathione S-transferase pi 1 glutathione transferase fatty acid ethyl ester synthase III deafness, X-linked
Names	7 PI FAEES3 DFN7 HGNC:4638 glutathione S-transferase pi GST3 GSTP1
Usage Summary	Immunofluorescence: Strong expression of the protein seen in the nuclei and cytoplasm of A431 and U2OS cells. Recommended concentration: 10µg/ml. Flow Cytometry: Flow cytometric analysis of A431 cells. Recommended concentration: 10ug/ml.
Accession ID	NP_000843.1
Blocking Peptide	EBP06802
Immunogen	Peptide with sequence C-LADQGQSWKEEV, from the internal region of the protein sequence according to NP_000843.1.
Peptide Sequence	C-LADQGQSWKEEV
Purification Method	Purified from goat serum by ammonium sulphate precipitation followed by antigen affinity chromatography using the immunizing peptide.
Shipping Instructions	Refrigerated
Predicted Species	Human, Mouse, Rat, Dog, Cow
Reactive Species	Human, Mouse, Rat, Dog
Human Gene ID	2950
Product Grade	https://prod-vector-labs-pimcore-assets.s3.us-east-1.amazonaws.com/assets/products/image/elite_plus_medium.png
IHC Results	Paraffin embedded Human Prostate. Recommended concentration: 5µg/ml.
ELISA	
Detection Limit	Antibody detection limit dilution 1:32000.
Western Blot	Approx 25kDa band observed in Human Kidney, Lung and Thymus lysates, lysates of cell lines HeLa, HEK293, Jurkat, CaCo-2, K562, NIH3T3, KNRK and MDCK, and, in nuclear lysates of cell lines HeLa, HEK293 and Jurkat (calculated MW of 23.4kDa according to Human NP_000843.1 and Rat NP_036709.1, 23.6kDa according to Mouse NP_038569.1 and 23.5kDa according to. Canine NP_001239096). Recommended concentration: 0.03-0.3µg/ml. Primary incubation 1 hour at room temperature.
Application Type	Pep-ELISA, WB, IHC, IF, FC

DOCUMENTS

- [Data Sheet](#)

GALLERY IMAGES

