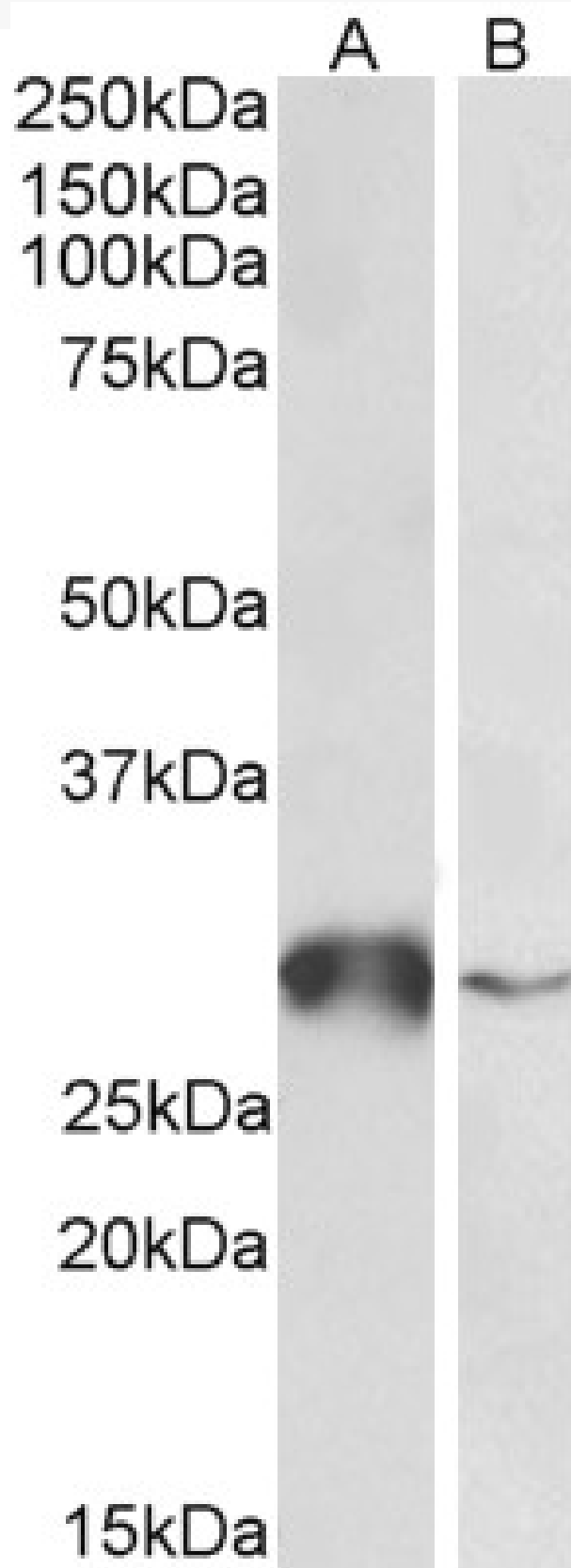


GOAT ANTI-GSTO1 ANTIBODY

SKU: EB12411



SPECIFICATIONS

Formulation	Supplied at 0.5 mg/ml in Tris saline, 0.02% sodium azide, pH7.3 with 0.5% bovine serum albumin.
Unit Size	100 µg
Storage Instructions	Aliquot and store at -20°C. Minimize freezing and thawing.
Synonym / Alias Names	GSTO1 glutathione S-transferase omega 1 GSTO 1-1 GSTTLp28 P28 SPG-R GSTO-1 MMA(V) reductase S-(Phenacyl)glutathione reductase glutathione S-transferase omega 1-1 glutathione S-transferase omega-1 glutathione-S-transferase like glutathione-depe
Accession ID	NP_004823.1; NP_001177931.1; NP_001177932.1
Blocking Peptide	EBP12411
Immunogen	Peptide with sequence C-KEDPTVSALLTSEKD, from the internal region (near C terminus) of the protein sequence according to NP_004823.1; NP_001177931.1; NP_001177932.1.
Product Comments	This antibody is expected to recognize all reported isoforms (NP_004823.1; NP_001177931.1; NP_001177932.1).
Peptide Sequence	C-KEDPTVSALLTSEKD
Purification Method	Purified from goat serum by ammonium sulphate precipitation followed by antigen affinity chromatography using the immunizing peptide.
Shipping Instructions	Refrigerated
Predicted Species	Human
Reactive Species	Human
Human Gene ID	9446
Product Grade	https://prod-vector-labs-pimcore-assets.s3.us-east-1.amazonaws.com/assets/products/image/elite_medium.png
ELISA Detection Limit	Antibody detection limit dilution 1:128000.
Western Blot	Approx 28kDa band observed in Human Liver and in Peripheral Blood Mononucleocytes lysates (calculated MW of 27.6kDa according to NP_004823.1). Recommended concentration: 0.5-2µg/ml.
Application Type	Pep-ELISA, WB

DOCUMENTS

- [Data Sheet](#)

GALLERY IMAGES

