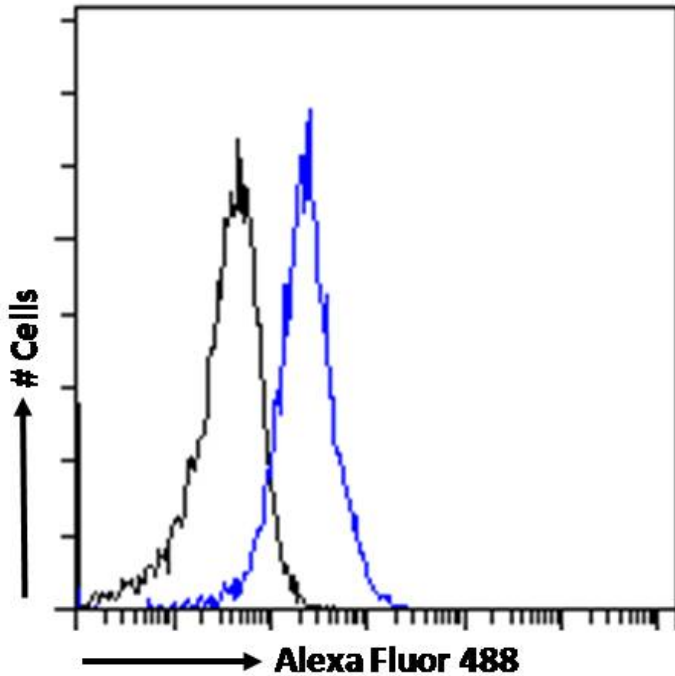


GOAT ANTI-GTRAP3-18 / JWA ANTIBODY

SKU: EB05631



SPECIFICATIONS

Formulation Supplied at 0.5 mg/ml in Tris saline, 0.02% sodium azide, pH7.3 with 0.5% bovine serum albumin.

Unit Size 100 µg

Storage Instructions Aliquot and store at -20°C. Minimize freezing and thawing.

Synonym / Alias Names putative MAPK activating protein PM27|glutamate transporter EEAC1-associated protein|dermal papilla derived protein 11|cytoskeleton related vitamin A responsive protein|PRA1 domain family 3|jmx|hp22|adducin|PRAF3|HSPC127|DERP11|ADP-ribosylation-like factor 6 interacting protein 5|JWA|GTRAP3-18|ARL6IP5

Usage Summary **Immunofluorescence:** Strong expression of the protein seen in the ER/ plasma membranes and cytoplasm of A431 cells. Recommended concentration: 10µg/ml. **Flow Cytometry:** Flow cytometric analysis of A431 cells. Recommended concentration: 10ug/ml.

Accession ID NP_006398.1

Blocking Peptide EBP05631

Immunogen Peptide with sequence C-NRLTDYISKVKE, from the C Terminus of the protein sequence according to NP_006398.1.

Product Comments	C2 passed G1 as 20kDa in HBR; C2P2 fail in _enh; try HBAM, HBCR, HBFC BP08/10/2021; 22+48kDa in HBAM-B104, faint 48kDa in HBAM-B201, multiple bands in > 37kDa in both HBCR, multiple bands include 22kDa in both HBFC, opt in HBAM-B201 at 2ug/ml, rpt HBAM-B104 at 1ug/ml; try HBCC BP25/10/2021, 21kDa+multiple bands in HBAM-B201, 21+28+48kDa in HBAM, 55kDa in HBCC-E101, 50kDa in HBCC-E201, try both HBAMat 1ug/ml + peptide next try A431 and U251BP27/10/2021; 22+28+48kDa in both HBAM-B201 and blocked completely, 48+37+30kDa in A43-C10403, 70kDa in A43-C10404 (shrt exp), 60-70kDa in both U251 (shrt exp); HBAM as optimistic but in blocking; over to Jane BP01/11/2021
Peptide Sequence	C-NRLTDYISKVKE
Purification Method	Purified from goat serum by ammonium sulphate precipitation followed by antigen affinity chromatography using the immunizing peptide.
Shipping Instructions	Refrigerated
Predicted Species	Human
Reactive Species	Human
Human Gene ID	10550
Product Grade	https://prod-vector-labs-pimcore-assets.s3.us-east-1.amazonaws.com/assets/products/image/elite_plus_medium.png
IHC Results	Paraffin embedded Human Tonsil and Small Intestine. Recommended concentration: 3.75µg/ml.
ELISA Detection Limit	Antibody detection limit dilution 1:32000.
Western Blot	Approx 22kDa band observed in Human Cerebellum lysates and in lysates of cell line K562 (calculated MW of 21.6kDa according to NP_006398.1). An additional band of 75-100kDa was also observed in some lysates and was successfully blocked by incubation with the immunizing peptide. Recommended concentration: 0.3-1µg/ml. Primary incubation 1 hour at room temperature.
Application Type	Pep-ELISA, WB, IHC, IF, FC

DOCUMENTS

- [Data Sheet](#)

GALLERY IMAGES

