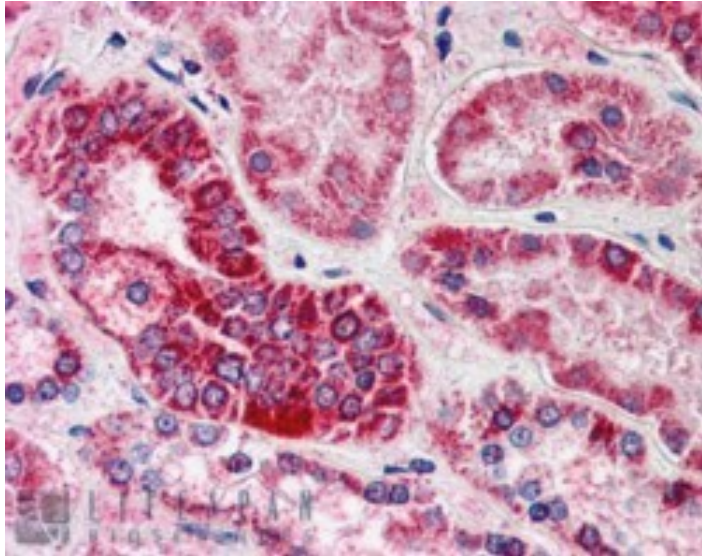




GOAT ANTI-GULP1 / CED6 ANTIBODY

SKU: EB05447



SPECIFICATIONS

Formulation Supplied at 0.5 mg/ml in Tris saline, 0.02% sodium azide, pH7.3 with 0.5% bovine serum albumin.

Unit Size 100 µg

Storage Instructions Aliquot and store at -20°C. Minimize freezing and thawing.

Synonym / Alias Names engulfment adapter protein|PTB domain adaptor protein
CED-6|OTTHUMP00000205911|OTTHUMP00000205909|OTTHUMP00000205908|FLJ31156|CED6|GULP,
engulfment adaptor PTB domain containing 1|CED-6 protein|GULP1|CED-6

Accession ID NP_057399.1

Blocking Peptide EBP05447

Immunogen Peptide with sequence EGTVFCLDPLDSRC, from the C Terminus of the protein sequence according to NP_057399.1.

Peptide Sequence EGTVFCLDPLDSRC

Purification Method Purified from goat serum by ammonium sulphate precipitation followed by antigen affinity chromatography using the immunizing peptide.

Shipping Instructions Refrigerated



Predicted Species	Human, Mouse, Rat, Dog
Reactive Species	Human
Human Gene ID	51454
Mouse Gene ID	70676
Product Grade	https://prod-vector-labs-pimcore-assets.s3.us-east-1.amazonaws.com/assets/products/image/elite_medium.png
IHC Results	In paraffin embedded Human Kidney shows staining of cytoplasm, stronger in a selection of epithelial cells of distal convoluted tubules. Recommended concentration: 5-10 µg/ml.
ELISA	
Detection Limit	Antibody detection limit dilution 1:64000.
Western Blot	Approx 35kDa band observed in Human Placenta lysates (calculated MW of 34.5kDa according to NP_057399.1). Recommended concentration: 0.2-0.6µg/ml. An additional band of unknown identity was also consistently observed at approx.46kDa. This band was successfully blocked by incubation with the immunising peptide.
Application Type	Pep-ELISA, WB, IHC

DOCUMENTS

- [Data Sheet](#)

GALLERY IMAGES



www.everestbiotech.com

Email: customerservice@vectorlabs.com

Telephone: [\(650\) 697-3600](tel:(650)697-3600)

