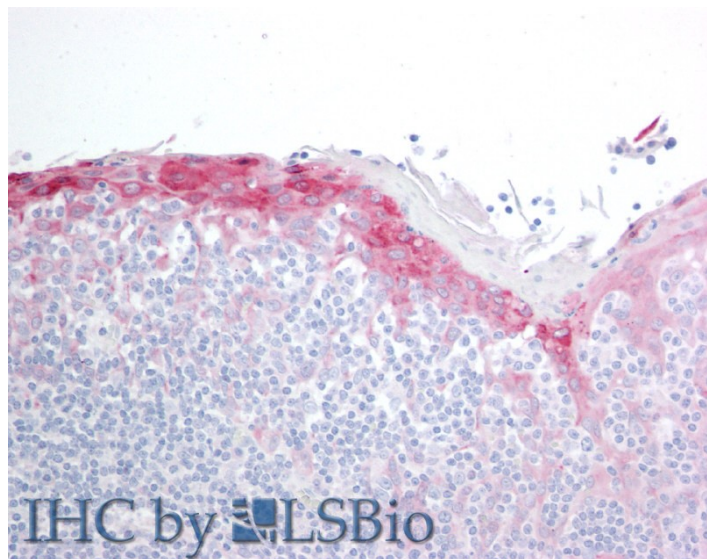


# GOAT ANTI-H11 / HSP22 ANTIBODY

**SKU:** EB05677



## SPECIFICATIONS

**Formulation** Supplied at 0.5 mg/ml in Tris saline, 0.02% sodium azide, pH7.3 with 0.5% bovine serum albumin.

**Unit Size** 100 µg

**Storage Instructions** Aliquot and store at -20°C. Minimize freezing and thawing.

**Synonym / Alias Names** heat shock protein beta-8|E2-induced gene 1|spinal muscular atrophy, distal, adult, autosomal dominant|small stress protein-like protein HSP22|protein kinase H11|hereditary motor neuropathy, distal|heat shock 27kDa protein 8|Charcot-Marie-Tooth disease, spinal|HSP22|HMN2A|HMN2|H11|E2IG1|DHMN2|CMT2L|heat shock 22kDa protein 8|HSPB8

**Accession ID** NP\_055180.1

**Blocking Peptide** EBP05677

**Immunogen** Peptide with sequence NELPQDSQEVCT, from the C Terminus of the protein sequence according to NP\_055180.1.

**Peptide Sequence** NELPQDSQEVCT

**Purification Method** Purified from goat serum by ammonium sulphate precipitation followed by antigen affinity chromatography using the immunizing peptide.

<b>Shipping Instructions</b>	Refrigerated
<b>Predicted Species</b>	Human
<b>Reactive Species</b>	Human
<b>Human Gene ID</b>	26353
<b>Product Grade</b>	<a href="https://prod-vector-labs-pimcore-assets.s3.us-east-1.amazonaws.com/assets/products/image/elite_medium.png">https://prod-vector-labs-pimcore-assets.s3.us-east-1.amazonaws.com/assets/products/image/elite_medium.png</a>
<b>IHC Results</b>	Paraffin embedded Human Adrenal Gland and Tonsil. Recommended concentration: 10µg/ml.
<b>ELISA</b>	
<b>Detection Limit</b>	Antibody detection limit dilution 1:32000.
<b>Western Blot</b>	Approx 20-25kDa band seen in Human Skeletal Muscle lysate [Predicted MW of approx. 22kDa according to NP_055180]. Recommended for use at 0.5-1µg/ml. Primary incubated for 1 hour.
<b>Application Type</b>	Pep-ELISA, WB, IHC

## DOCUMENTS

- [Data Sheet](#)

## GALLERY IMAGES

