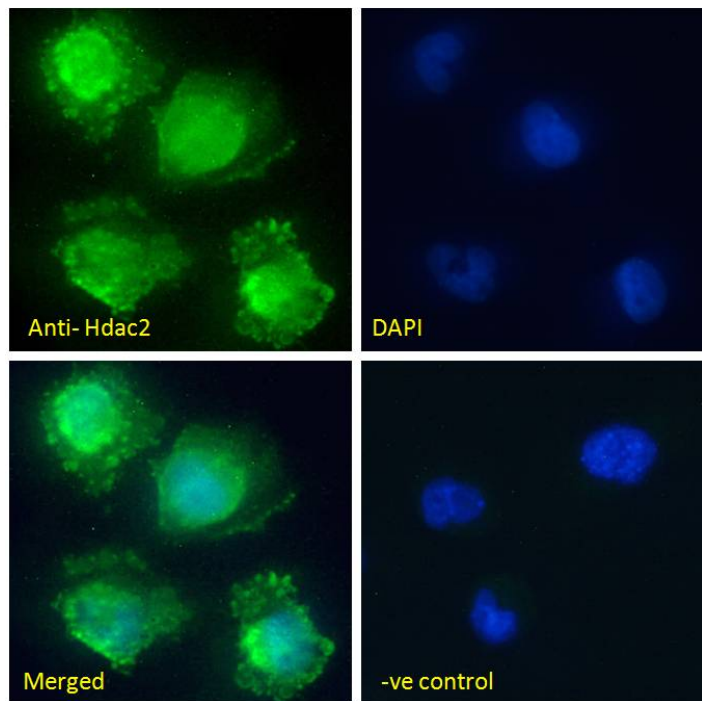


GOAT ANTI-HDAC2 (MOUSE) ANTIBODY

SKU: EB11448



SPECIFICATIONS

Formulation Supplied at 0.5 mg/ml in Tris saline, 0.02% sodium azide, pH7.3 with 0.5% bovine serum albumin.

Unit Size 100 µg

Storage Instructions Aliquot and store at -20°C. Minimize freezing and thawing.

Synonym / Alias Names Hdac2| Yy1bp| YY1 transcription factor-binding protein| YAF1| OTTMUSP00000022803| mRPD3| histone deacetylase 2| HD2| D10Wsu179e

Usage Summary **Immunofluorescence:** Strong expression of the protein seen in the nuclei of U251 cells and additionally in the membrane and cytoplasm of NIH3T3 cells. Recommended concentration: 10µg/ml.

Flow Cytometry: Flow cytometric analysis of HeLa cells. Recommended concentration: 10ug/ml.

Accession ID NP_032255.2

Blocking Peptide EBP11448

Immunogen	Peptide with sequence C-PEDAVHEDSGDE, from the internal region of the protein sequence according to NP_032255.2.
Product Comments	This antibody may cross-react with HDAC1
Peptide Sequence	C-PEDAVHEDSGDE
Purification Method	Purified from goat serum by ammonium sulphate precipitation followed by antigen affinity chromatography using the immunizing peptide.
Shipping Instructions	Refrigerated
Predicted Species	Human, Mouse, Rat, Dog, Pig, Cow
Reactive Species	Human, Mouse
Human Gene ID	3066
Mouse Gene ID	15182
Rat Gene ID	84577
Product Grade	https://prod-vector-labs-pimcore-assets.s3.us-east-1.amazonaws.com/assets/products/image/elite_plus_medium.png
ELISA Detection Limit	Antibody detection limit dilution 1:2000.
Western Blot	Approx 55-60kDa band observed in nuclear lysates of cell line HEK293 (calculated MW of 55.3kDa according to NP_032255.2). Recommended concentration: 1-2µg/ml. Primary incubation 1 hour at room temperature.
Application Type	Pep-ELISA, WB, IF, FC

DOCUMENTS

- [Data Sheet](#)

GALLERY IMAGES

