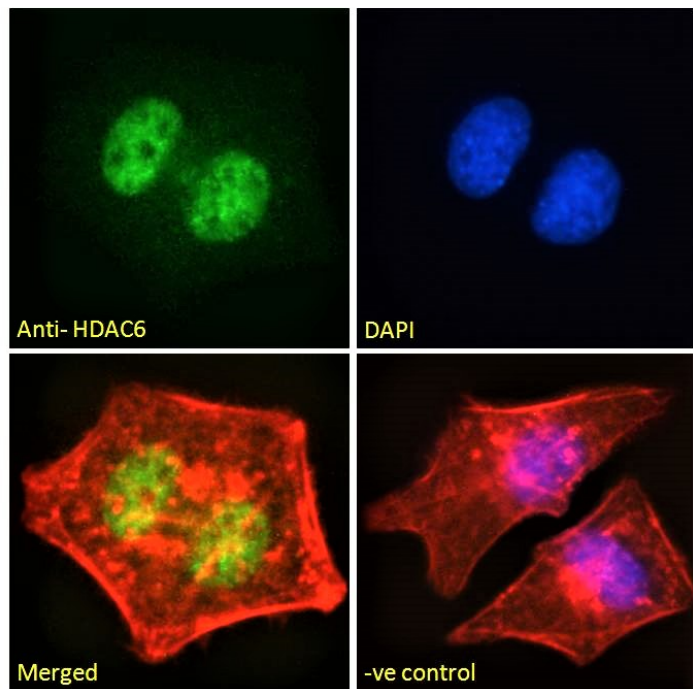


GOAT ANTI-HDAC6 ANTIBODY

SKU: EB05431



SPECIFICATIONS

Formulation Supplied at 0.5 mg/ml in Tris saline, 0.02% sodium azide, pH7.3 with 0.5% bovine serum albumin.

Unit Size 100 µg

Storage Instructions Aliquot and store at -20°C. Minimize freezing and thawing.

Synonym /

Alias Names KIAA0901|JM21|HD6|histone deacetylase 6|HDAC6

Usage Summary **Immunofluorescence:** Strong expression of the protein seen in the nuclei of A431 and HeLa cells. Recommended concentration: 10µg/ml. **Flow Cytometry:** Flow cytometric analysis of A431 cells. Recommended concentration: 10ug/ml.

Accession ID NP_006035.2; NP_001308154.1

Blocking Peptide EBP05431

Immunogen Peptide with sequence C-AHQNKFGEDMPHPH, from the C Terminus of the protein sequence according to NP_006035.2; NP_001308154.1.

Peptide Sequence	C-AHQNKFGEDMPHPH
Purification Method	Purified from goat serum by ammonium sulphate precipitation followed by antigen affinity chromatography using the immunizing peptide.
Shipping Instructions	Refrigerated
Predicted Species	Human, Mouse, Rat, Dog, Cow
Reactive Species	Human
Human Gene ID	10013
Product Grade	https://prod-vector-labs-pimcore-assets.s3.us-east-1.amazonaws.com/assets/products/image/elite_plus_medium.png
IHC Results	Paraffin embedded Human Kidney. Recommended concentration: 5µg/ml.
ELISA	
Detection Limit	Antibody detection limit dilution 1:32000.
Application Type	Pep-ELISA, IF, FC, IHC

DOCUMENTS

- [Data Sheet](#)

GALLERY IMAGES

