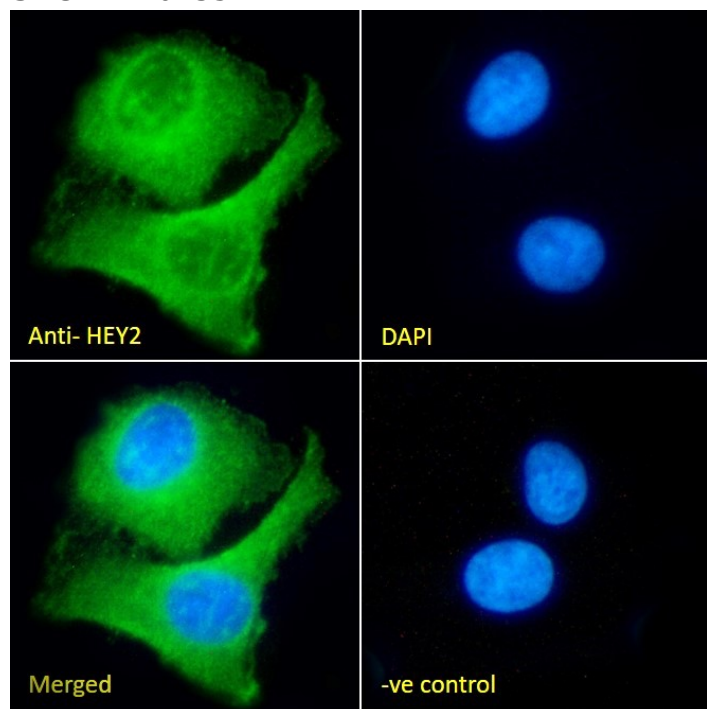


## GOAT ANTI-HEY2 ANTIBODY

SKU: EB10135



## SPECIFICATIONS

<b>Formulation</b>	Supplied at 0.5 mg/ml in Tris saline, 0.02% sodium azide, pH7.3 with 0.5% bovine serum albumin.
<b>Unit Size</b>	100 µg
<b>Storage</b>	
<b>Instructions</b>	Aliquot and store at -20°C. Minimize freezing and thawing.
<b>Synonym / Alias</b>	HEY2 OTTHUMP00000017138 MGC10720 HRT2 HES-related repressor protein 1 HESR2 HERP1 hairy-related transcription factor 2 hairy/enhancer-of-split related with YRPW motif 2 GRL GRIDLOCK CHF1 cardiovascular basic helix-loop-helix factor 1 bHLHb32
<b>Names</b>	
<b>Usage Summary</b>	<p><b>Immunofluorescence:</b> Strong expression of the protein seen in the nuclei and cytoplasm of HEK293 cells. Recommended concentration: 10µg/ml.</p> <p><b>Flow Cytometry:</b> Flow cytometric analysis of HEK293 cells. Recommended concentration: 10ug/ml.</p>
<b>Accession ID</b>	NP_036391.1
<b>Blocking Peptide</b>	EBP10135

<b>Immunogen</b>	Peptide with sequence HASESTPCRLSTTS, from the internal region of the protein sequence according to NP_036391.1.
<b>Peptide Sequence</b>	HASESTPCRLSTTS
<b>Purification Method</b>	Purified from goat serum by ammonium sulphate precipitation followed by antigen affinity chromatography using the immunizing peptide.
<b>Shipping Instructions</b>	Refrigerated
<b>Predicted Species</b>	Human, Cow
<b>Reactive Species</b>	Human
<b>Human Gene ID</b>	23493
<b>Mouse Gene ID</b>	15214
<b>Rat Gene ID</b>	155430
<b>Product Grade</b>	<a href="https://prod-vector-labs-pimcore-assets.s3.us-east-1.amazonaws.com/assets/products/image/elite_plus_medium.png">https://prod-vector-labs-pimcore-assets.s3.us-east-1.amazonaws.com/assets/products/image/elite_plus_medium.png</a>
<b>ELISA Detection Limit</b>	Antibody detection limit dilution 1:16000.
<b>Western Blot</b>	Approx. 30kDa band observed in nuclear lysates of cell lines HeLa and HEK293 and in HEK293 whole cell lysate (calculated MW of 35.8kDa according to NP_036391.1). Recommended concentration: 2-3.5µg/ml. Primary incubation 1 hour at room temperature.
<b>Application Type</b>	Pep-ELISA, WB, IF, FC

## DOCUMENTS

- [Data Sheet](#)

## GALLERY IMAGES

