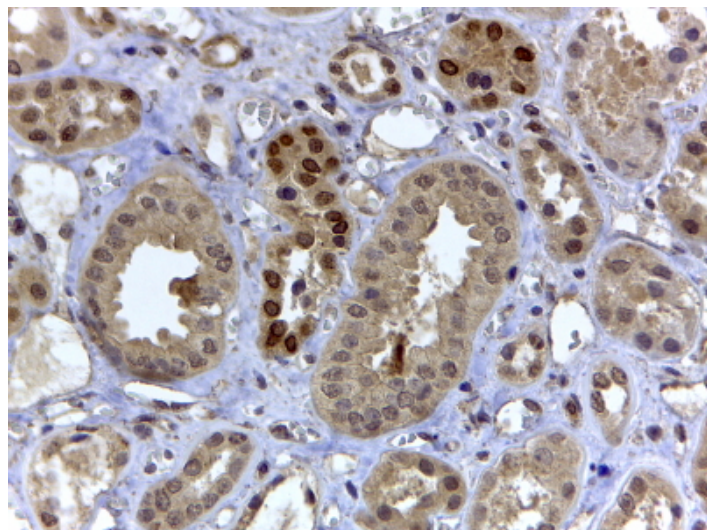


# GOAT ANTI-HIF3A ANTIBODY

**SKU:** EB10073



## SPECIFICATIONS

<b>Formulation</b>	Supplied at 0.5 mg/ml in Tris saline, 0.02% sodium azide, pH7.3 with 0.5% bovine serum albumin.
<b>Unit Size</b>	100 µg
<b>Storage Instructions</b>	Aliquot and store at -20°C. Minimize freezing and thawing.
<b>Synonym / Alias Names</b>	HIF3A PASD7 MOP7 IPAS inhibitory PAS domain protein hypoxia-inducible factor-3 alpha 4 hypoxia inducible factor 3, alpha subunit HIF-3A4 HIF-3A2 HIF-3A bHLHe17
<b>Accession ID</b>	NP_690007.1; NP_690008.2
<b>Blocking Peptide</b>	EBP10073
<b>Immunogen</b>	Peptide with sequence QDHRSTTELRLKEKS-C, from the N Terminus of the protein sequence according to NP_690007.1; NP_690008.2.
<b>Product Comments</b>	This antibody is expected to recognize isoform a and c (NP_690007.1; NP_690008.2).
<b>Peptide Sequence</b>	QDHRSTTELRLKEKS-C
<b>Purification Method</b>	Purified from goat serum by ammonium sulphate precipitation followed by antigen affinity chromatography using the immunizing peptide.

<b>Shipping Instructions</b>	Refrigerated
<b>Predicted Species</b>	Human, Mouse, Rat
<b>Reactive Species</b>	Human
<b>Human Gene ID</b>	64344
<b>Mouse Gene ID</b>	53417
<b>Rat Gene ID</b>	64345
<b>Product Grade</b>	<a href="https://prod-vector-labs-pimcore-assets.s3.us-east-1.amazonaws.com/assets/products/image/elite_medium.png">https://prod-vector-labs-pimcore-assets.s3.us-east-1.amazonaws.com/assets/products/image/elite_medium.png</a>
<b>IHC Results</b>	In paraffin embedded Human Kidney shows nuclear staining in some of the DCT. Recommended concentration, 4-6µg/ml.
<b>ELISA</b>	
<b>Detection Limit</b>	Antibody detection limit dilution 1:128000.
<b>Application Type</b>	Pep-ELISA, IHC

## DOCUMENTS

- [Data Sheet](#)

## GALLERY IMAGES

