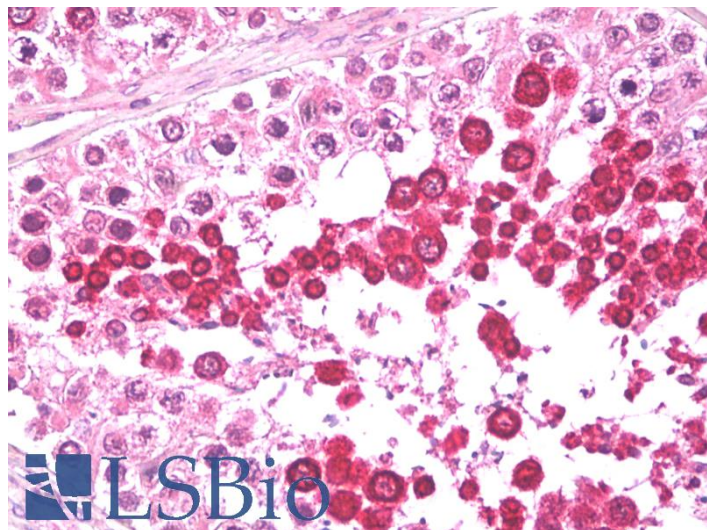


GOAT ANTI-HIPPI ANTIBODY

SKU: EB09292



SPECIFICATIONS

Formulation Supplied at 0.5 mg/ml in Tris saline, 0.02% sodium azide, pH7.3 with 0.5% bovine serum albumin.

Unit Size 100 µg

Storage Instructions Aliquot and store at -20°C. Minimize freezing and thawing.

Synonym / Alias Names huntingtin interacting protein-1 interacting protein|estrogen-related receptor beta like 1|HIP1 protein interactor|MHS4R2|HIPPI|FLJ10147|ESRRBL1|intraflagellar transport 57 homolog (Chlamydomonas)|IFT57

Accession ID NP_060480.1

Blocking Peptide EBP09292

Immunogen Peptide with sequence C-EQPQEYDDPNATISN , from the internal region of the protein sequence according to NP_060480.1.

Peptide Sequence C-EQPQEYDDPNATISN

Purification Method Purified from goat serum by ammonium sulphate precipitation followed by antigen affinity chromatography using the immunizing peptide.

Shipping Instructions Refrigerated

Predicted Species	Human, Mouse, Rat, Cow
Reactive Species	Human, Mouse
Human Gene ID	55081
Mouse Gene ID	73916
Rat Gene ID	303968
Product Grade	https://prod-vector-labs-pimcore-assets.s3.us-east-1.amazonaws.com/assets/products/image/elite_medium.png
IHC Results	Paraffin embedded Human Testis. Recommended concentration: 5µg/ml.
ELISA	
Detection Limit	Antibody detection limit dilution 1:8000.
Western Blot	Approx 49kDa band observed in Human and Mouse Brain lysates (calculated MW of 49.1kDa according to Human NP_060480.1 and of 48.8kDa according to Mouse NP_082956.2). Recommended concentration: 1-3µg/ml.
Application Type	Pep-ELISA, WB, IHC

DOCUMENTS

- [Data Sheet](#)

GALLERY IMAGES

