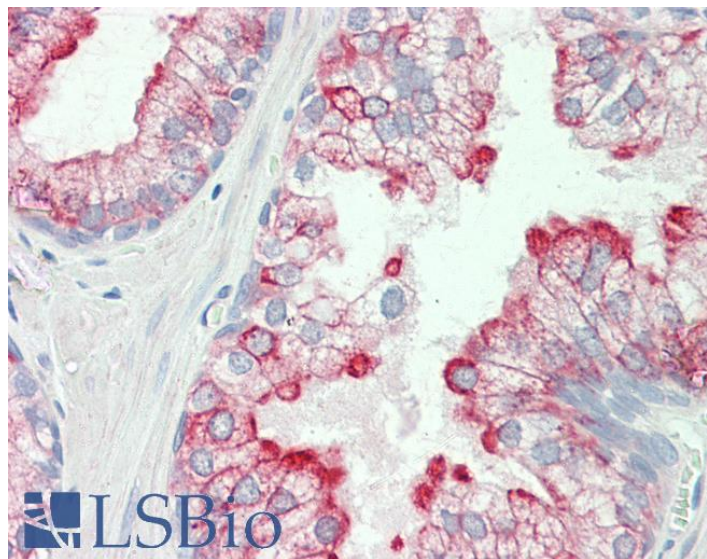


# GOAT ANTI-HISTAMINE H3 RECEPTOR ANTIBODY

**SKU:** EB11808



## SPECIFICATIONS

**Formulation** Supplied at 0.5 mg/ml in Tris saline, 0.02% sodium azide, pH7.3 with 0.5% bovine serum albumin.

**Unit Size** 100 µg

**Storage Instructions** Aliquot and store at -20°C. Minimize freezing and thawing.

**Synonym / Alias Names** OTTHUMP00000031459|HRH3|histamine receptor H3|histamine H3 receptor|HH3R|H3R|G-protein coupled receptor 97|GPCR97|G protein-coupled receptor 97

**Accession ID** NP\_009163.2

**Blocking Peptide** EBP11808

**Immunogen** Peptide with sequence C-SVTRAVSYRAQQGDT, from the internal region of the protein sequence according to NP\_009163.2.

**Peptide Sequence** C-SVTRAVSYRAQQGDT

**Purification Method** Purified from goat serum by ammonium sulphate precipitation followed by antigen affinity chromatography using the immunizing peptide.

**Shipping Instructions** Refrigerated

<b>Predicted Species</b>	Human, Mouse, Rat, Dog, Cow
<b>Reactive Species</b>	Human
<b>Human Gene ID</b>	11255
<b>Mouse Gene ID</b>	99296
<b>Rat Gene ID</b>	85268
<b>Product Grade</b>	<a href="https://prod-vector-labs-pimcore-assets.s3.us-east-1.amazonaws.com/assets/products/image/elite_medium.png">https://prod-vector-labs-pimcore-assets.s3.us-east-1.amazonaws.com/assets/products/image/elite_medium.png</a>
<b>IHC Results</b>	Paraffin embedded Human Prostate. Recommended concentration: 5µg/ml.
<b>ELISA</b>	
<b>Detection Limit</b>	Antibody detection limit dilution 1:128000.
<b>Western Blot</b>	Approx 48kDa band observed in lysates of cell line A549 (calculated MW of 48.7kDa according to NP_009163.2). Recommended concentration: 0.1-0.3µg/ml. Primary incubation was 1 hour.
<b>Application Type</b>	Pep-ELISA, WB, IHC

## DOCUMENTS

- [Data Sheet](#)

## GALLERY IMAGES

