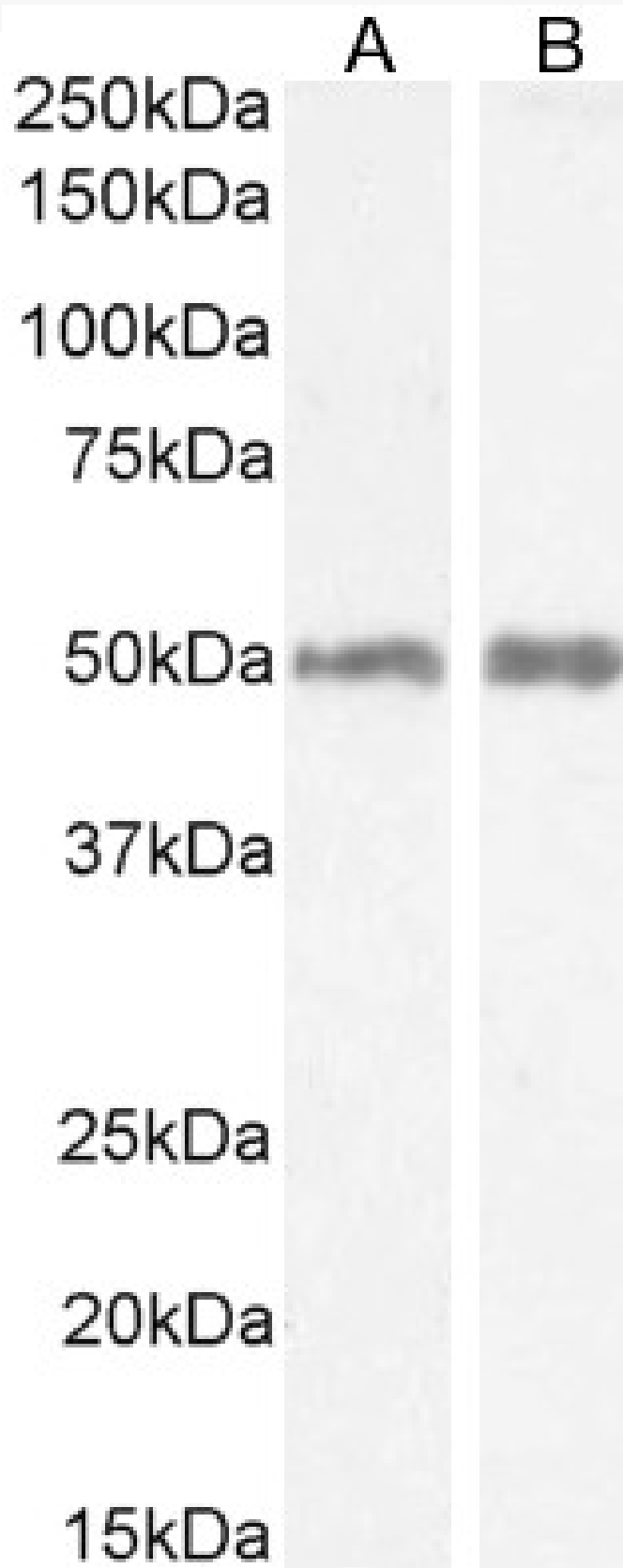


GOAT ANTI-HISTAMINE RECEPTOR H2 (AA309-323) (MOUSE) ANTIBODY

SKU: EB11020



SPECIFICATIONS

Formulation	Supplied at 0.5 mg/ml in Tris saline, 0.02% sodium azide, pH7.3 with 0.5% bovine serum albumin.
Unit Size	100 µg
Storage Instructions	Aliquot and store at -20°C. Minimize freezing and thawing.
Synonym / Alias Names	HRH2 histamine receptor H2 histamine H2 receptor HH2R H2R gastric receptor I gastric receptor 1 histamine H2 receptor gastric receptor I gastric receptor 1 HH2R H2R histamine receptor H2 HRH2
Accession ID	NP_001399939.1; NP_001010973.1
Blocking Peptide	EBP11020
Immunogen	Peptide with sequence C-SHNSHKTSRLNNS, from the internal region of the protein sequence according to NP_001399939.1; NP_001010973.1.
Product Comments	This antibody is expected to recognize Mouse NP_001399939.1 iso 3, NP_001010973.1 iso 1 and Rat NP_001010973.1.
Peptide Sequence	C-SHNSHKTSRLNNS
Purification Method	Purified from goat serum by ammonium sulphate precipitation followed by antigen affinity chromatography using the immunizing peptide.
Shipping Instructions	Refrigerated
Predicted Species	Mouse, Rat
Reactive Species	Mouse, Rat
Mouse Gene ID	15466
Rat Gene ID	25461
Product Grade	https://prod-vector-labs-pimcore-assets.s3.us-east-1.amazonaws.com/assets/products/image/elite_medium.png
ELISA Detection Limit	Antibody detection limit dilution 1:32000.
Western Blot	Approx. 50kDa band observed in Mouse Stomach and Rat Small Intestine lysates (calculated MW of 47.3kDa according to Mouse NP_001399939.1 and 45.2kDa according to Rat NP_001399940.1). Recommended concentration: 0.5-2ug/ml. Primary incubation 1 hour at room temperature.
Application Type	Pep-ELISA, WB

DOCUMENTS

- [Data Sheet](#)

GALLERY IMAGES

