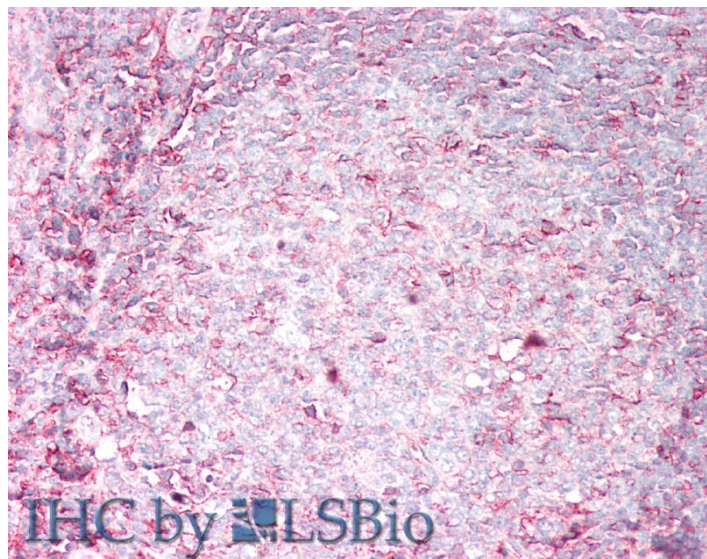


GOAT ANTI-HLA-B (AA132-143) ANTIBODY

SKU: EB12828



SPECIFICATIONS

Formulation Supplied at 0.5 mg/ml in Tris saline, 0.02% sodium azide, pH7.3 with 0.5% bovine serum albumin.

Unit Size 100 µg

Storage Instructions Aliquot and store at -20°C. Minimize freezing and thawing.

Synonym / Alias Names MHC class I antigen GN0010|MHC HLA-B transmembrane glycoprotein|MHC HLA-B cell surface glycoprotein|MHC Class I HLA heavy chain|HLA class I histocompatibility antigen, B alpha chain|SPDA1|HLAB|AS|major histocompatibility complex, class I, B|HLA-B

Accession ID NP_005505.2

Blocking Peptide EBP12828

Immunogen Peptide with sequence C-RLLRGHDQYAYD , from the internal region of the protein sequence according to NP_005505.2.

Peptide Sequence C-RLLRGHDQYAYD

Purification Method Purified from goat serum by ammonium sulphate precipitation followed by antigen affinity chromatography using the immunizing peptide.

Shipping Instructions Refrigerated

Predicted Species	Human
Reactive Species	Human
Human Gene ID	3106
Product Grade	https://prod-vector-labs-pimcore-assets.s3.us-east-1.amazonaws.com/assets/products/image/elite_medium.png
IHC Results	Paraffin embedded Human Tonsil. Recommended concentration: 2.5µg/ml.
ELISA	
Detection Limit	Antibody detection limit dilution 1:128000.
Western Blot	Approx 40+45kDa bands observed in lysates of cell line Jurkat (calculated MW of 40.5kDa according to NP_005505.2). The observed 45kDa band corresponds to the glycosylated form. Recommended concentration: 0.1-0.3µg/ml. Primary incubation was 1 hour.
Application Type	Pep-ELISA, WB, IHC

DOCUMENTS

- [Data Sheet](#)

GALLERY IMAGES

