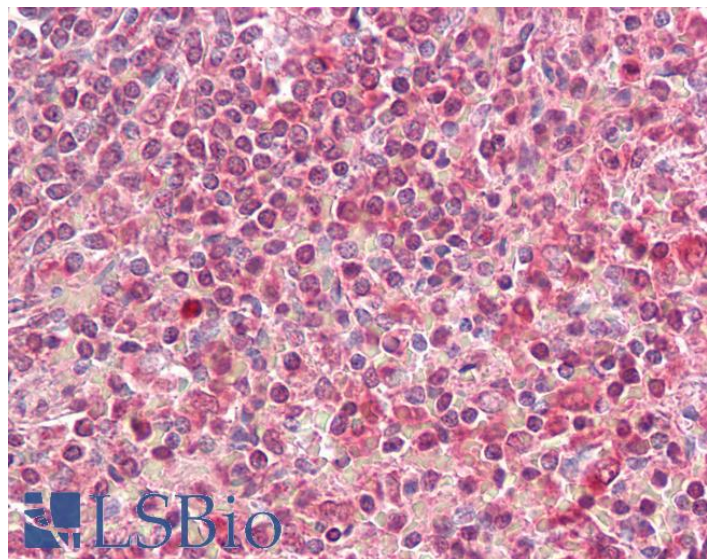


GOAT ANTI-HLA-DQA2 ANTIBODY

SKU: EB10420



SPECIFICATIONS

Formulation Supplied at 0.5 mg/ml in Tris saline, 0.02% sodium azide, pH7.3 with 0.5% bovine serum albumin.

Unit Size 100 µg

Storage Instructions Aliquot and store at -20°C. Minimize freezing and thawing.

Accession ID NP_064440.1

Blocking Peptide EBP10420

Immunogen Peptide with sequence C-QSHGPSGQYTH, from the internal region of the protein sequence according to NP_064440.1.

Peptide Sequence C-QSHGPSGQYTH

Purification Method Purified from goat serum by ammonium sulphate precipitation followed by antigen affinity chromatography using the immunizing peptide.

Shipping Instructions Refrigerated

Predicted Species Human

Reactive Species	Human
Human Gene ID	3118
Product Grade	https://prod-vector-labs-pimcore-assets.s3.us-east-1.amazonaws.com/assets/products/image/elite_medium.png
IHC Results	Paraffin embedded Human Spleen. Recommended concentration: 3.75µg/ml.
ELISA	
Detection Limit	Antibody detection limit dilution 1:16000.
Western Blot	Approx 26kDa band observed in Human Bone Marrow lysates (calculated MW of 28.0kDa according to NP_064440.1). Recommended concentration: 0.1-0.3 µg/ml. Primary incubation was 1 hour.
Application Type	Pep-ELISA, WB, IHC

DOCUMENTS

- [Data Sheet](#)

GALLERY IMAGES

